

# Charlotte County Fire-EMS Public Safety Training Institute



CHARLOTTE COUNTY  
FLORIDA

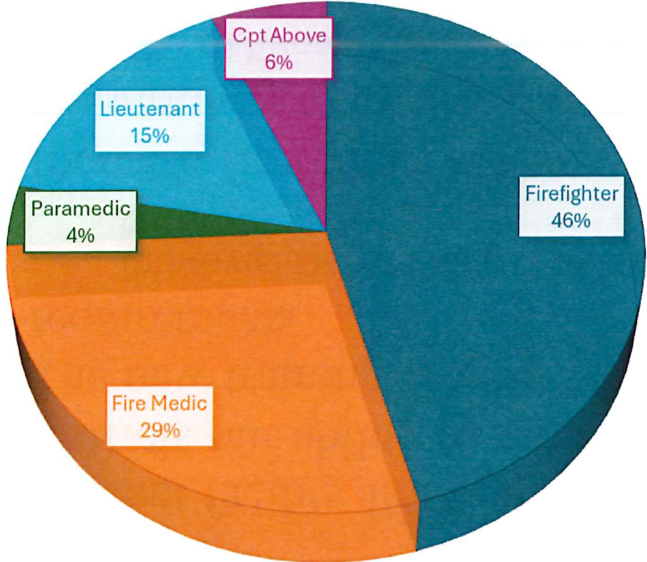
# Training Center Proposal

- Training facility
  - classrooms and office space
- 3 stall apparatus bay
- Gear wash station
- Propane tank
- Burn zone for tower and props
- Design
  - \$1.35M
- Construction
  - \$10.5M
- Projected Operating Impact
  - \$812,742

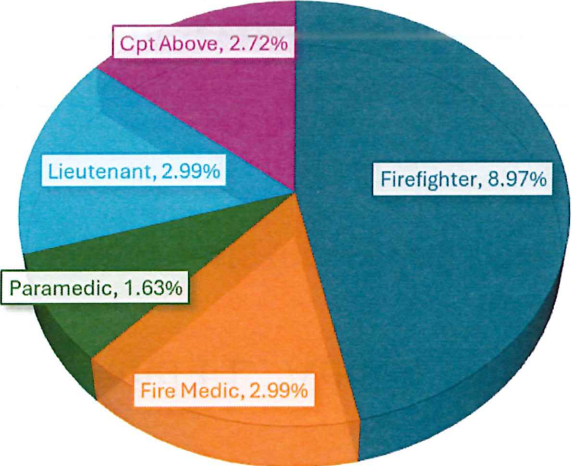


# Current Staffing Snapshot

368 POSITIONS ALOTTED



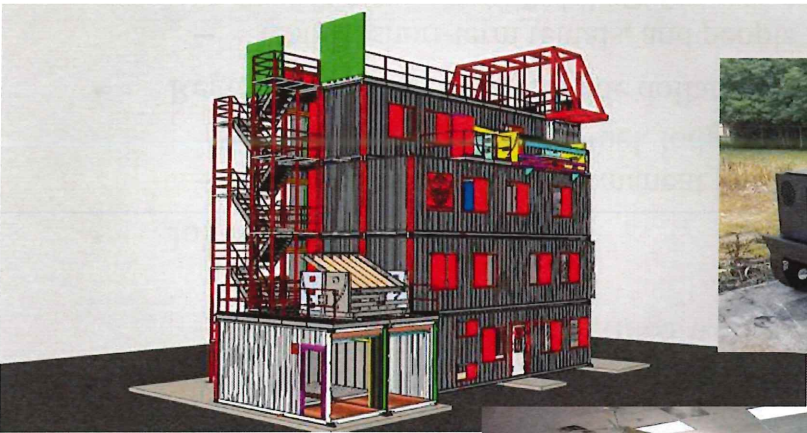
VACANCIES BY POSITION



# Functional Building Design

- Current facility limits training capacity, causing increased off-site costs, and restricts our ability to meet future workforce demand
- The new training facility would exceed NFPA, ISO and FL. Admin code requirements
  - Improved ISO training credits directly support lower insurance costs for residents and businesses
- Increase firefighter safety
- Opportunity to create a regional training complex
  - The additional classroom space would allow for the delivery of several beginner and advanced Fire/EMS classes throughout the year, drawing more visitors to our area
- Would allow for the implementation of a Fire Academy

# Functional Building Design



- Redundant safety systems
- Garage simulation
- Removable or slidable doors
- Vehicle fire simulator
- Multiple burn rooms on separate divisions
- Rappelling anchors, and confined space modules
- Classroom space to conduct and teach multiple classes a year

# Economic Impact

- Reduced Training Costs = Reinvested tax dollars
  - Eliminate long-distance travel, lodging, and per diem expenses
  - Reduce backfill/overtime expenses
- Workforce development and retention
  - Reduces cost barriers for residents entering Public Safety careers
  - Creates a more stable, skilled workforce, lowering turnover and overtime costs
- Job creation
  - Construction phase, permanent jobs, secondary jobs (vendors supplying PPE, props, fuel, lodging, and equipment)
- Regional training brings outside dollars into our community
  - Hotels, short-term rentals, and people moving to our community to pursue a career in Public Safety



# Economic Impact Provided by Tourism

## 40hr Class Economic Impact

- One class annually:
  - \$41,872.06
- Four classes annually:
  - 167,488.20

## Fire Academy Economic Impact

- 6-month academy:
  - \$568,047.97
- 6-month academy twice a year:
  - \$1,136,095.94



# Summary

- Provides a purpose-built, code-compliant training environment
- Supports safe, realistic, and repeatable fire and rescue training
- Improves firefighter readiness, safety, and operational consistency
- Reduces financial burden on taxpayers
- Maximizes return on investment
- Strengthens community resilience

