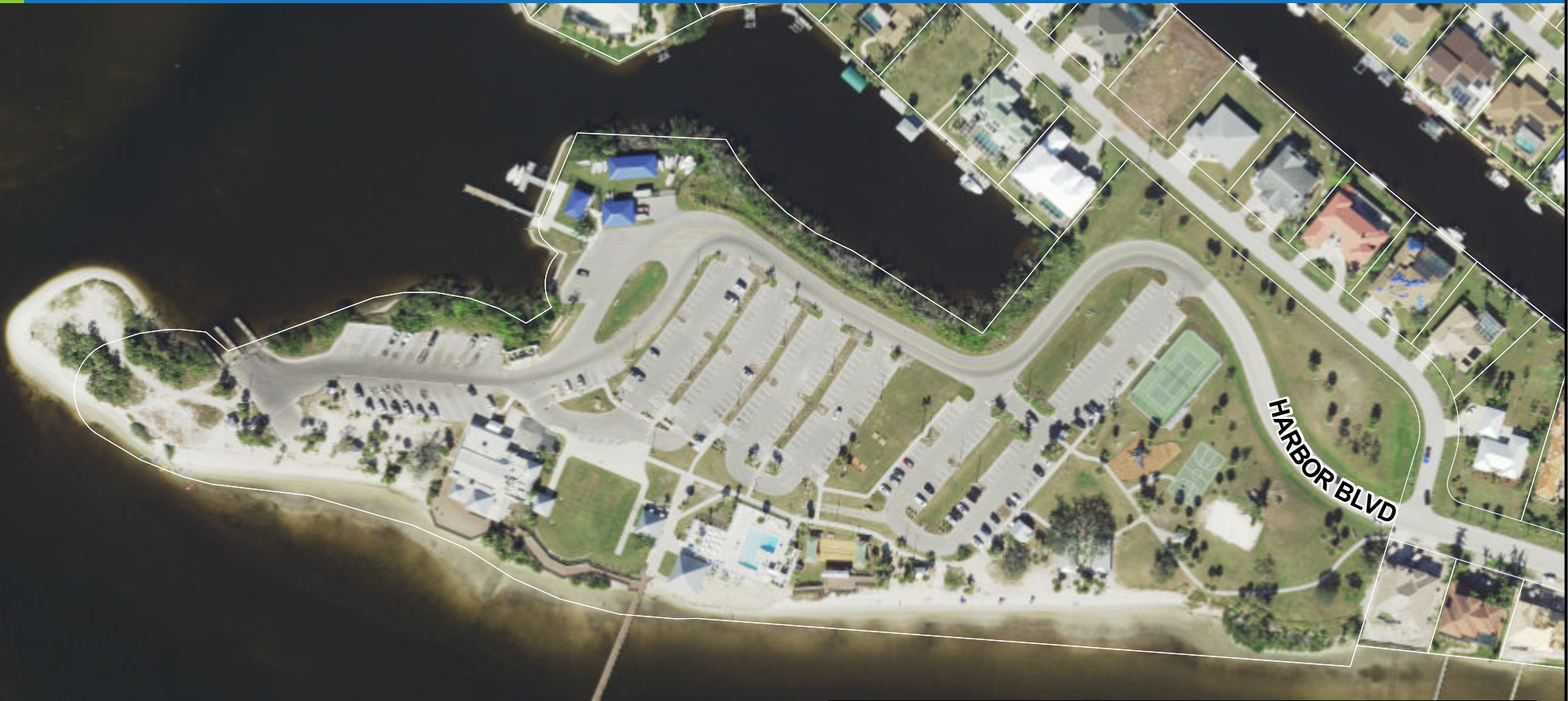


# CHARLOTTE COUNTY

Port Charlotte Beach Complex



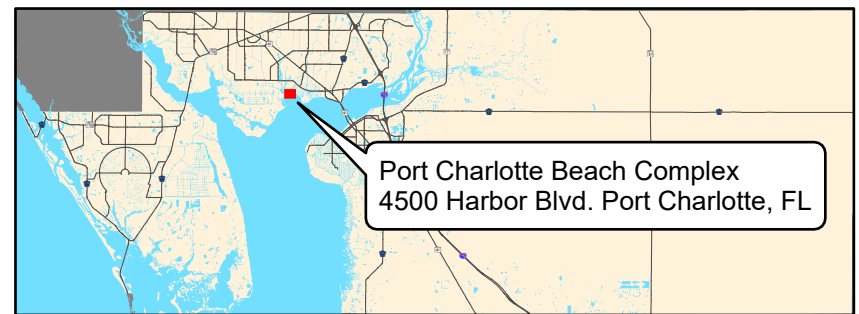
Stateplane Projection  
Datum: NAD83  
Units: Feet

Source: Community Development,  
SWFMD

Metadata available upon request



(NOT TO SCALE)



This map is a representation of compiled public information. It is believed to be an accurate and true depiction for the stated purpose, but Charlotte County and its employees make no guaranties, implied or otherwise, to the accuracy or completeness. We therefore do not accept any responsibilities as to its use. This is not a survey or is it to be used for design. Reflected Dimensions are for informational purposes only and may have been rounded to the nearest tenth. For precise dimensions, please refer to recorded plats and related documents.

© Copyright 2024 Port Charlotte, FL by Charlotte County  
Updated: 2/7/2024 8:38 AM By: Matheis - 4341

M:\Departments\LLIS\Projects\Website\Solodev\WebsiteMapProjects\APRX\port-charlotte-beach-complex\port-charlotte-beach-complex.aprx