

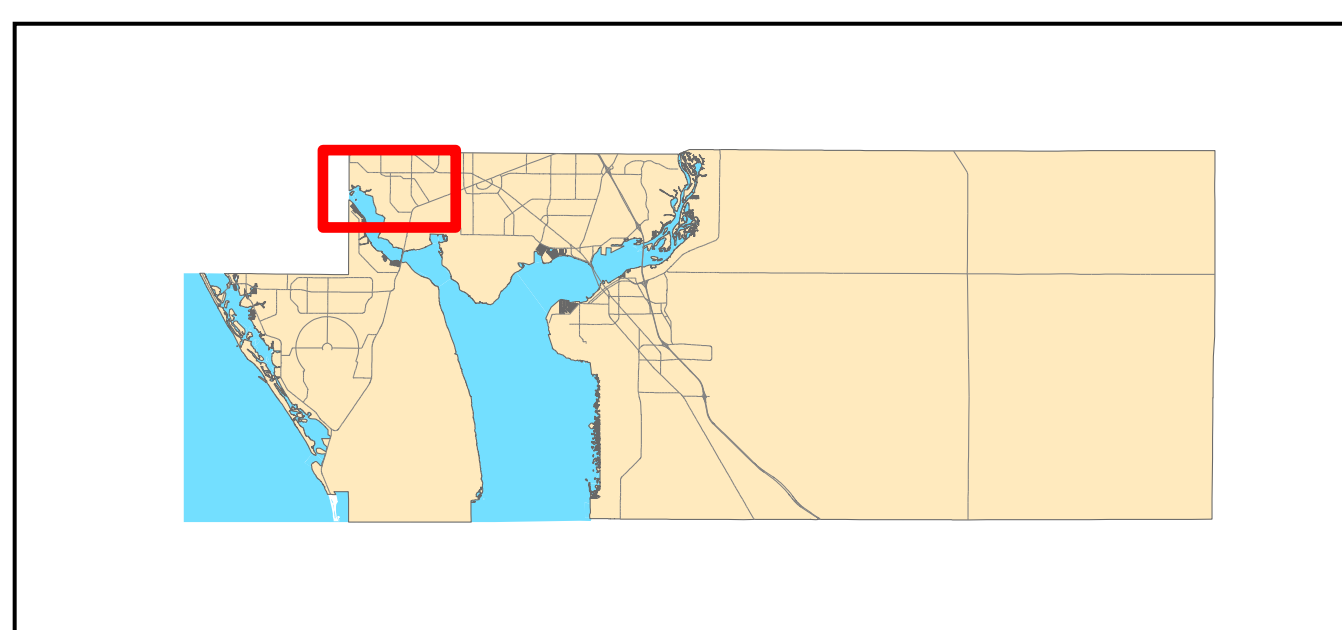
CHARLOTTE COUNTY

Port Charlotte Sections 24, 29, 30, 32, 35, 38, 46, 48, 49, 55, 61 and 100



CHARLOTTE COUNTY
Community Development

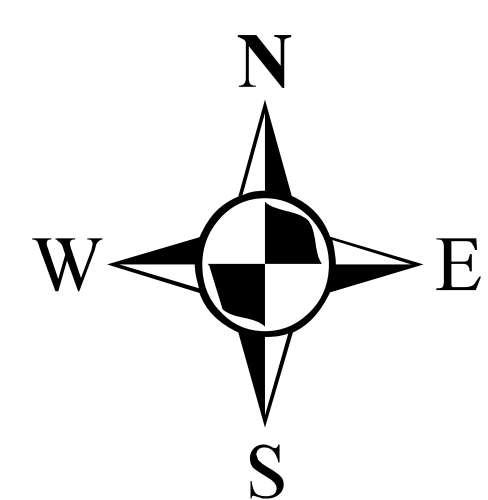
- Developed
- Residential
- Commercial
- Government Complex



Stateplane Projection
Datum: NAD83
Units: Feet

Source: Community Development,
Property Appraiser, CCGIS

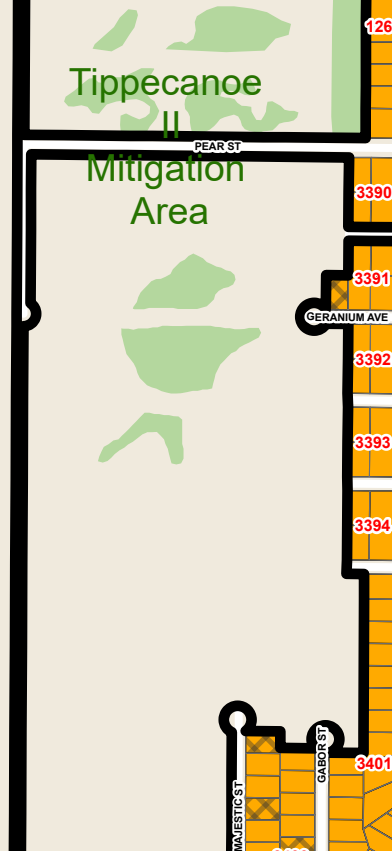
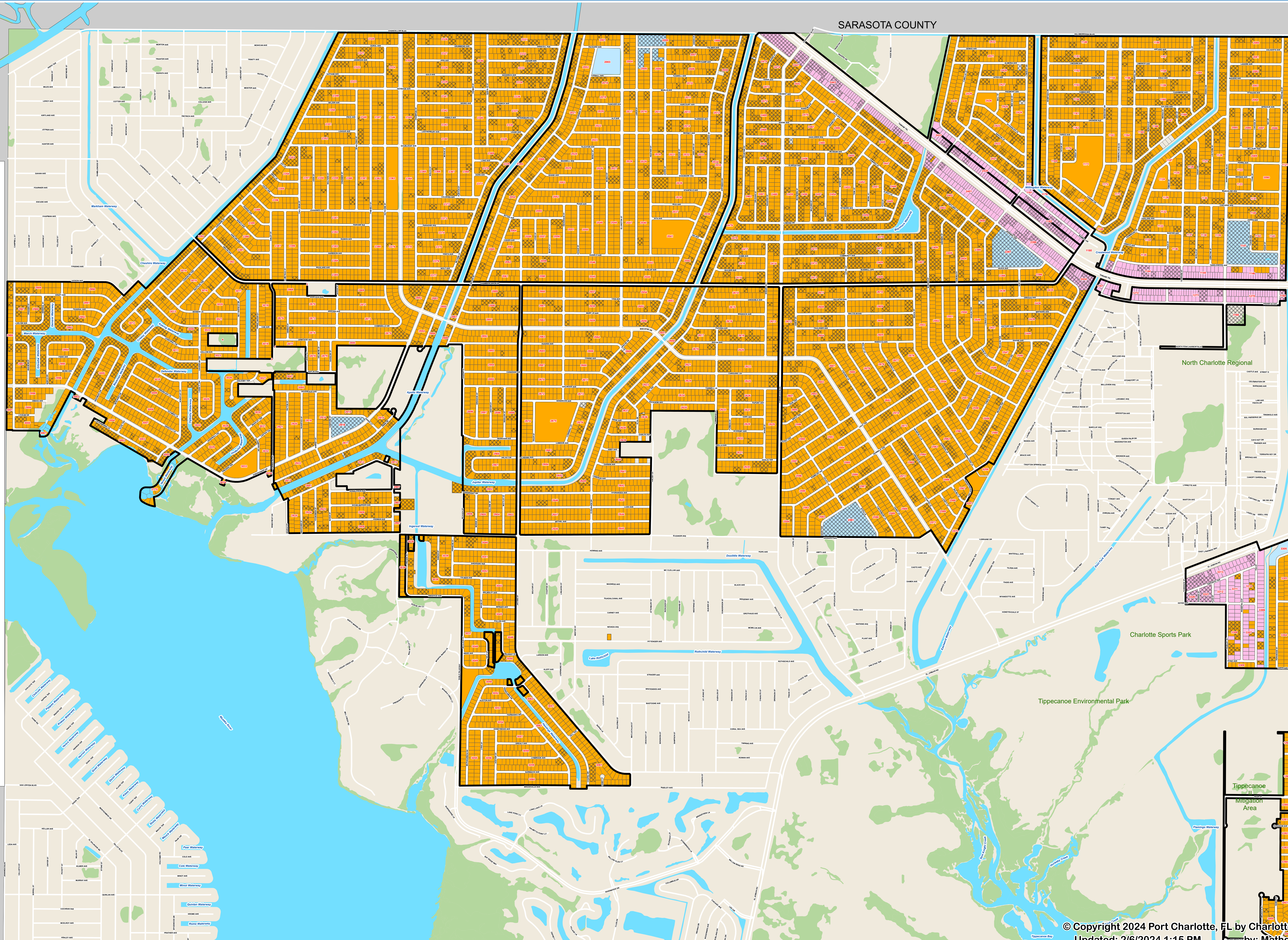
Metadata available upon request



(NOT TO SCALE)

SARASOTA COUNTY

SARASOTA COUNTY



© Copyright 2024 Port Charlotte, FL by Charlotte County
Updated: 2/6/2024 1:15 PM
by: Matheis- 4341