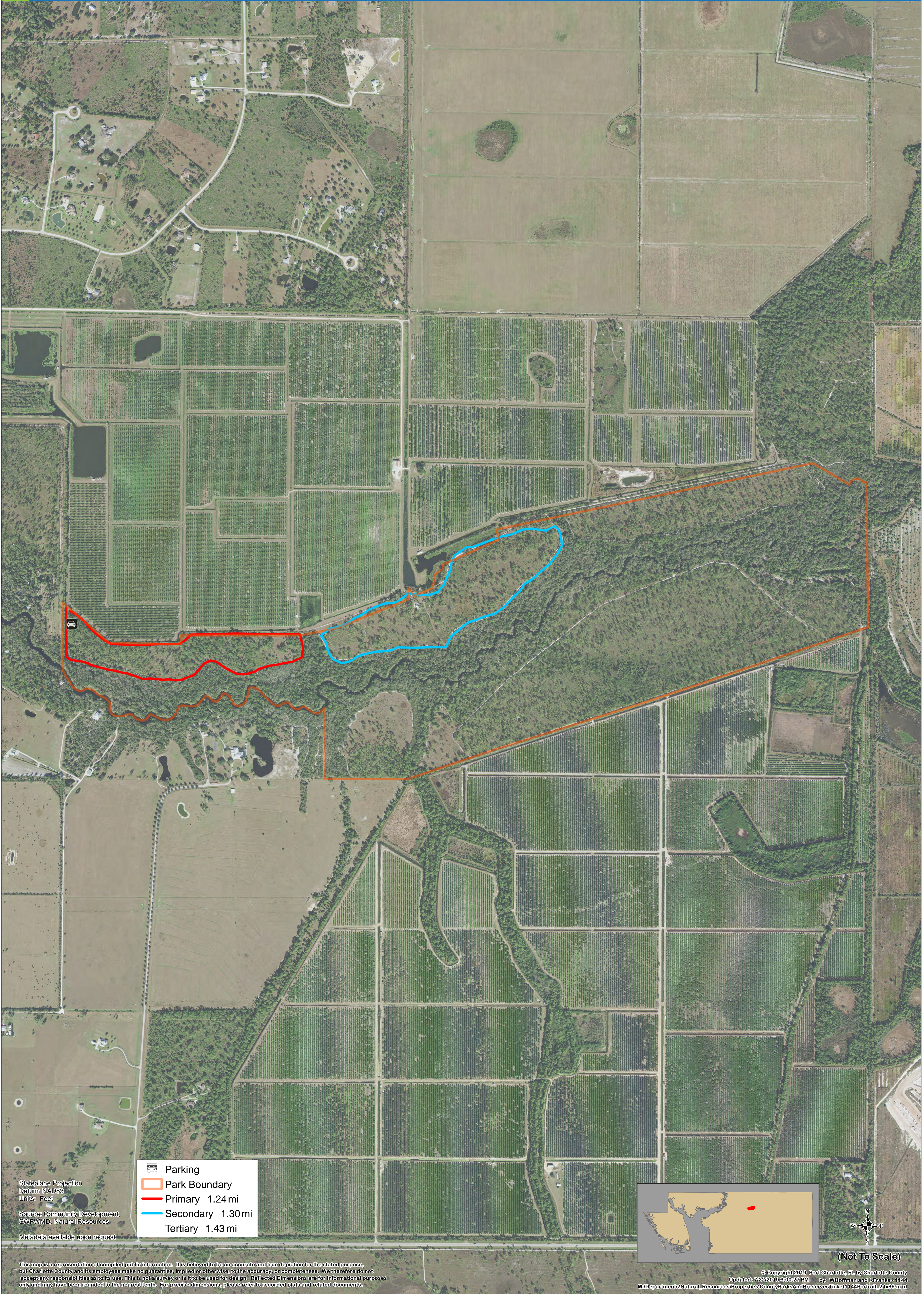




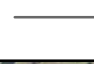


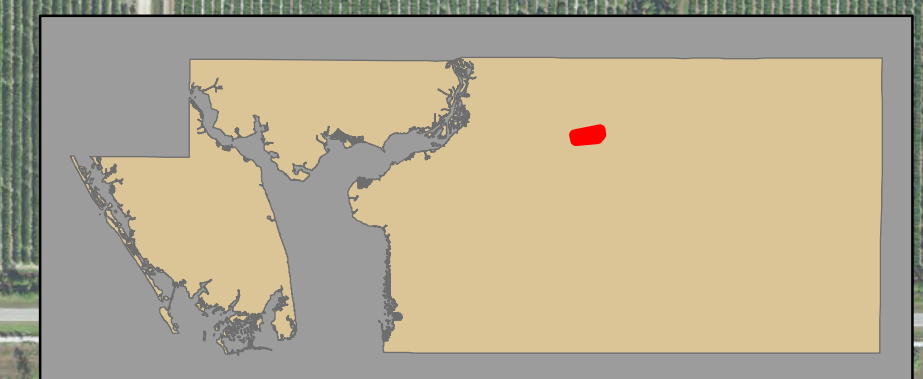
CHARLOTTE COUNTY

Shell Creek Preserve with trails and amenities



-  Parking
-  Park Boundary
-  Primary 1.24 mi
-  Secondary 1.30 mi
-  Tertiary 1.43 mi

Stateplane Projection
Datum: NAD83
Units: Feet
Source: Community Development,
SWFWMD, Natural Resources
Metadata available upon request



(Not To Scale)

This map is a representation of compiled public information. It is believed to be an accurate and true depiction for the stated purpose, but Charlotte County and its employees make no guarantee, implied or otherwise, to the accuracy, or completeness. We therefore do not accept any responsibilities as to its use. This is not a survey or is it to be used for design. Reflected Dimensions are for informational purposes only and may have been rounded to the nearest tenth. For precise dimensions, please refer to recorded plats and related documents.