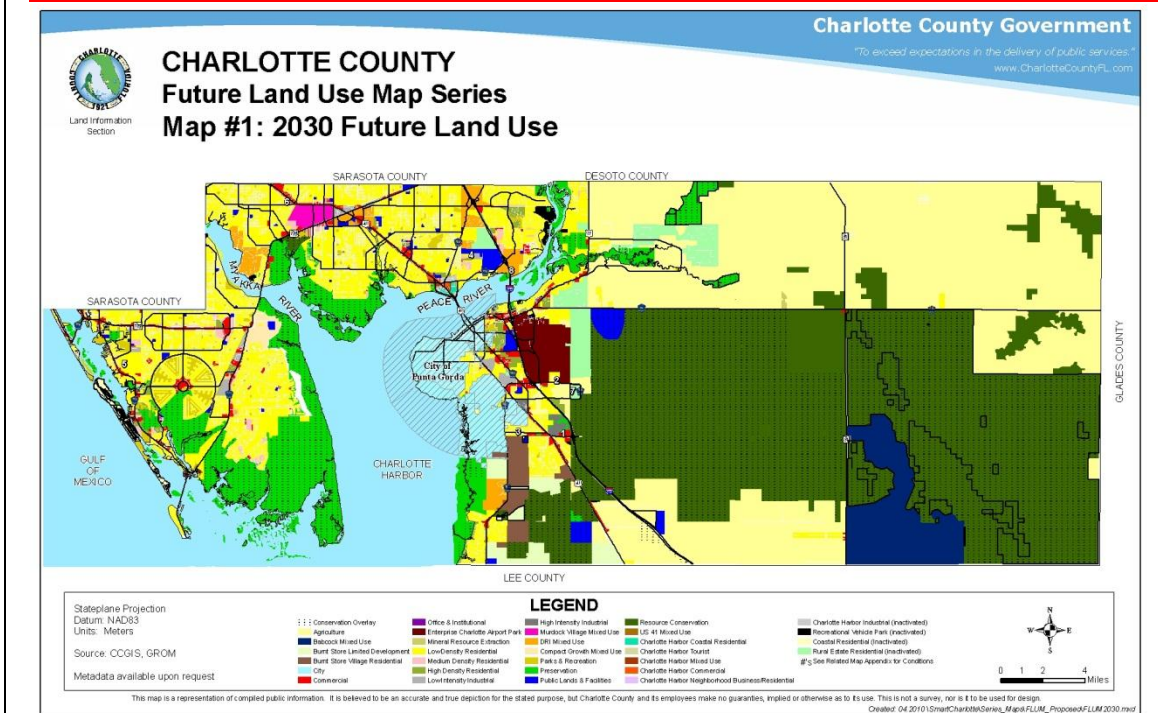
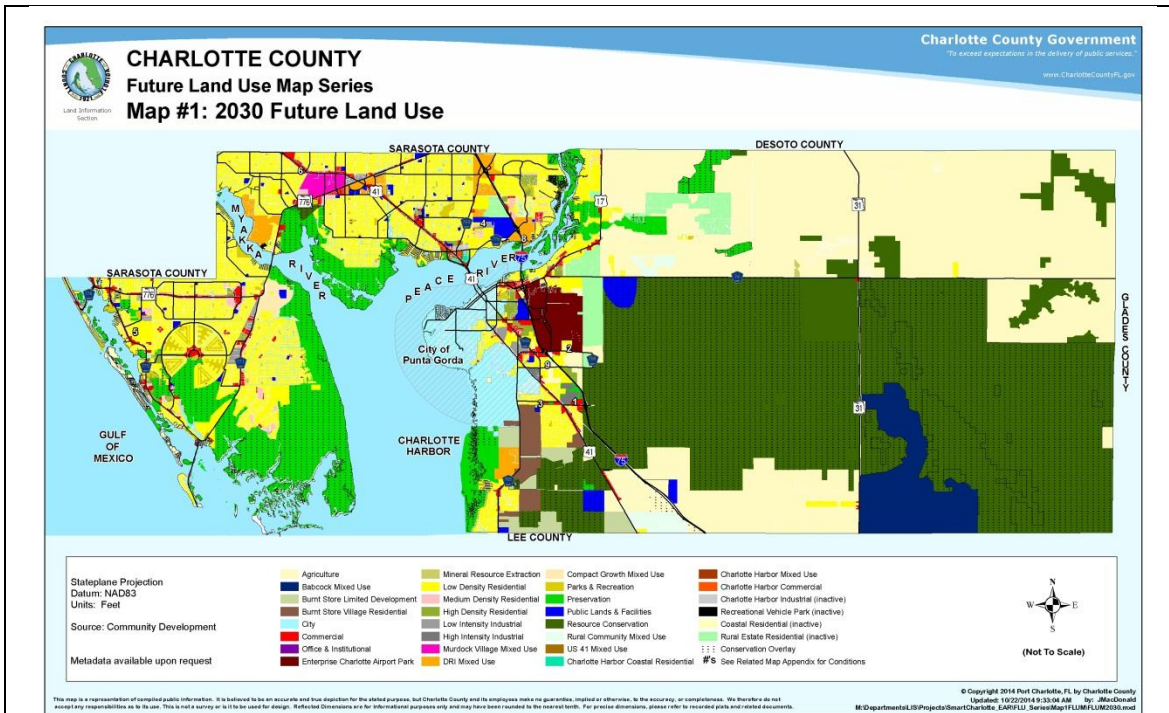

FLU APPENDIX II: FUTURE LAND USE MAP SERIES, “FLUM Series”
INDEX OF MAPS[MAP 1: 2030 Future Land Use](#)[MAP 1A: Charlotte Harbor 2030 FLU – Detail Map](#)[MAP 2: 2050 Framework](#)[MAP 3: 2030 Service Area Delineation](#)[MAP 4: ~~Watershed Overlay District~~ Planning Overlay Districts](#)[MAP 4A: Watershed Planning Overlay District](#)[MAP 54B: Surface Water Planning Protection Overlay District](#)[MAP 4C: Barrier Island Planning Overlay District](#)[MAP 4D: U.S. 41 Planning Overlay District](#)[MAP 5: Community Planning Areas](#)[MAP 6: ~~Prime Aquifer Recharge Area~~ Revitalizing Neighborhood Planning Areas](#)[MAP 6A: Charlotte Harbor Community Revitalizing Area](#)[MAP 7: ~~Public Water System Wellhead Protection Areas~~ Emerging Neighborhood Planning Areas](#)[MAP 8: ~~Special Area Overlay Districts~~ Economic Sector Planning Areas](#)[MAP 9: ~~Barrier Island Overlay District~~ Community Redevelopment Areas](#)[MAP 10: ~~Community Planning Areas~~ Prime Floridan Aquifer Recharge Area](#)[MAP 11: ~~Special Area Plans~~ Public Water System Wellhead Protection Areas](#)[MAP 12: FMSF Historic Sites](#)[MAP 13: Coastal Planning Area](#)[MAP 14: Coastal High Hazard Areas and Evacuation Routes](#)[MAP 15: Sea Level Rise](#)[MAP 16: Rivers and ~~Lakes~~ Other Water Bodies](#)[MAP 17: 100 Year Floodplains](#)[MAP 18: Wetlands](#)[MAP 19: Soils](#)[MAP 20: Topography](#)[MAP 21: Transfer of Density Waivers](#)[MAP 22: Critical Wildlife Corridors](#)[MAP 23: Rural Community Potential Locations](#)[MAP 24: MRE ~~Prohibited~~ Potential Locations](#)[MAP 25: Developments of Regional Impact](#)

MAP 1: 2030 Future Land Use



JPG File Type*

PDF File Type*

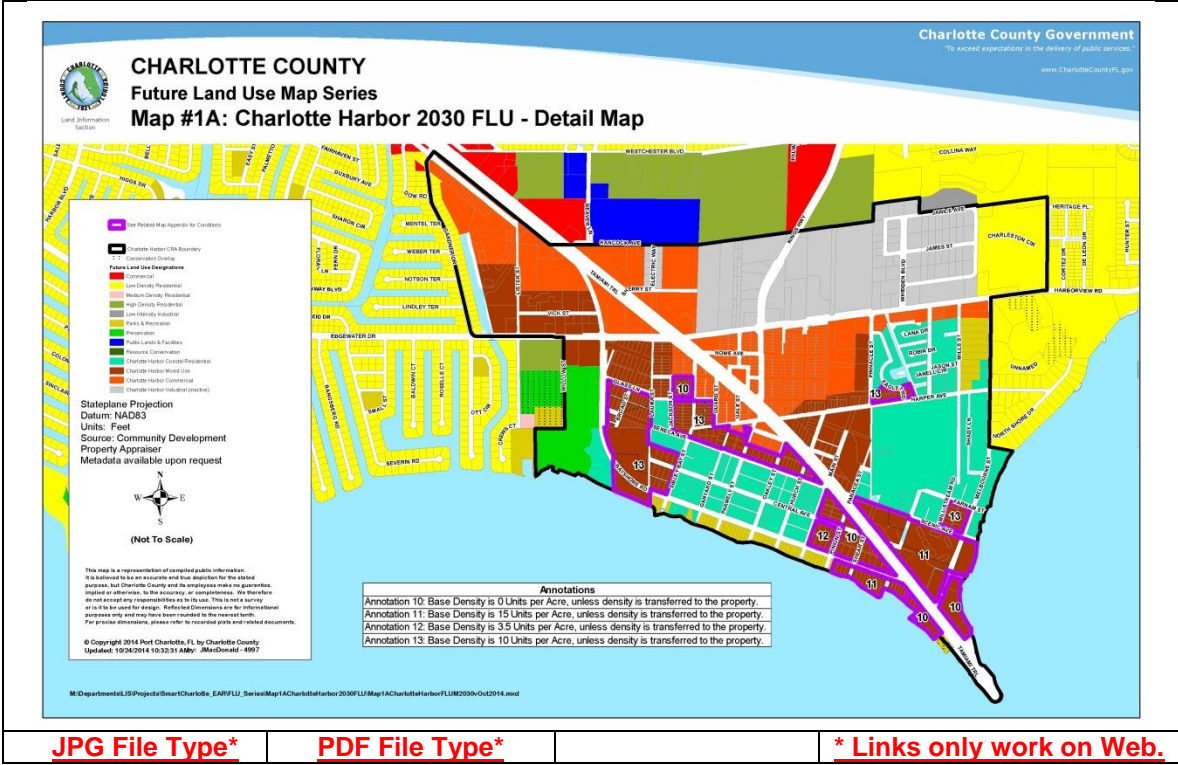
* Links only work on Web.

Parcel Based Future Land Use Map Annotations (Numbers visible on full sized map.)

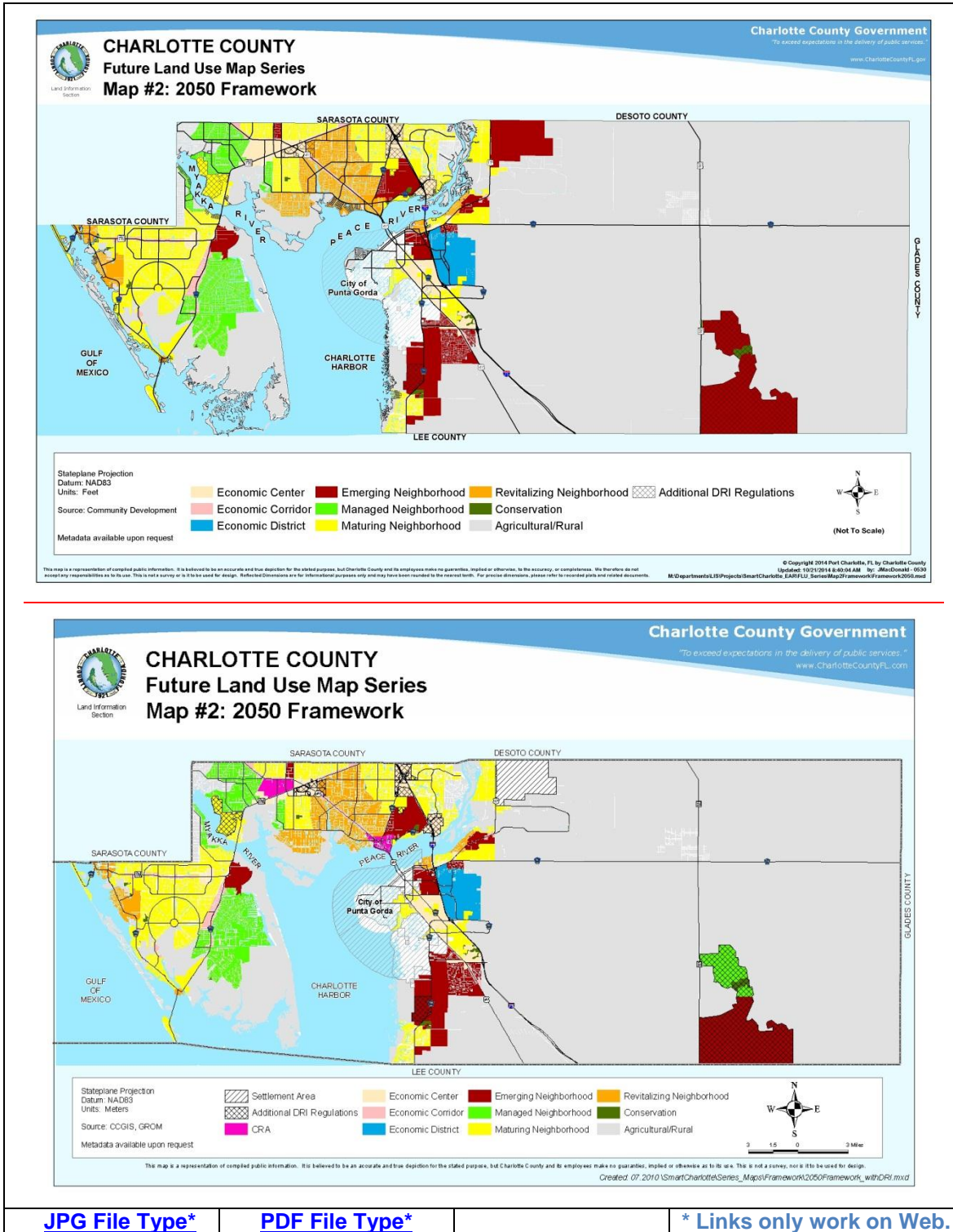
1. The 36.34 acre portion of the Essex Cape Cod, LLC development, as depicted on Exhibit A of Ordinance 2008-016, which carries the commercial center designation on the FLU map, shall permit a maximum of 508,000 sq. ft. of commercial retail development consistent with the commercial center land use designation.

2. The 40.55-acre site, which carries the Enterprise Charlotte Airport Park FLUM) designation and is described in Exhibit A of Ordinance 2008-017, may develop all uses permitted in the Enterprise Charlotte Airport Park FLUM designation. However, development shall be limited to a maximum FAR of 0.5, except that, if any commercial retail development is proposed on the site, then in that case a maximum FAR of 0.4 shall apply to all uses.
3. The 70.77 acre site, which carries the Commercial Center FLUM designation and is described in Ordinance 2008-072, development shall be limited to 444,000 square feet.
4. Limiting commercial & industrial intensity of the subject site to 525,000 sq ft & requiring the property to be rezoned as a PD.
5. The 170 acres +/- of property that is the subject of Petition PA-05-11-76-LS and Ordinance 2007-026, which carries the Low Density Residential designation on the FLUM, shall maintain a maximum of 400 units of density, and the portion of the property that is located within the Coastal High Hazard Area shall be limited to 3.5 units per acre.
6. Limit commercial intensity of the subject site to 135,254 sq ft.
7. Limit the base density to 1 unit per 10 acres.
8. Development within the 65.8 acre Coastal High Hazard Area (“CHHA”) incorporated into the Harborview Development of Regional Impact (“DRI”) by Resolution 2006-093 and which carries the Mixed Use designation on the Future Land Use Map, shall allow a maximum of 157 residential dwelling units.
9. Limit the residential density to 2 units per acre which carries the Low Density Residential FLUM designation and is the subject of PA-10-11-32-LS, as described in Ordinance #2011-022.
10. Limit the base density to 0 units per acre unless density is transferred to the site.
11. Limit the base density to 15 units per acre unless density is transferred to the site.
12. Limit the base density to 3.5 units per acre unless density is transferred to the site.
- 8-13. Limit the base density to 10 units per acre unless density is transferred to the site.

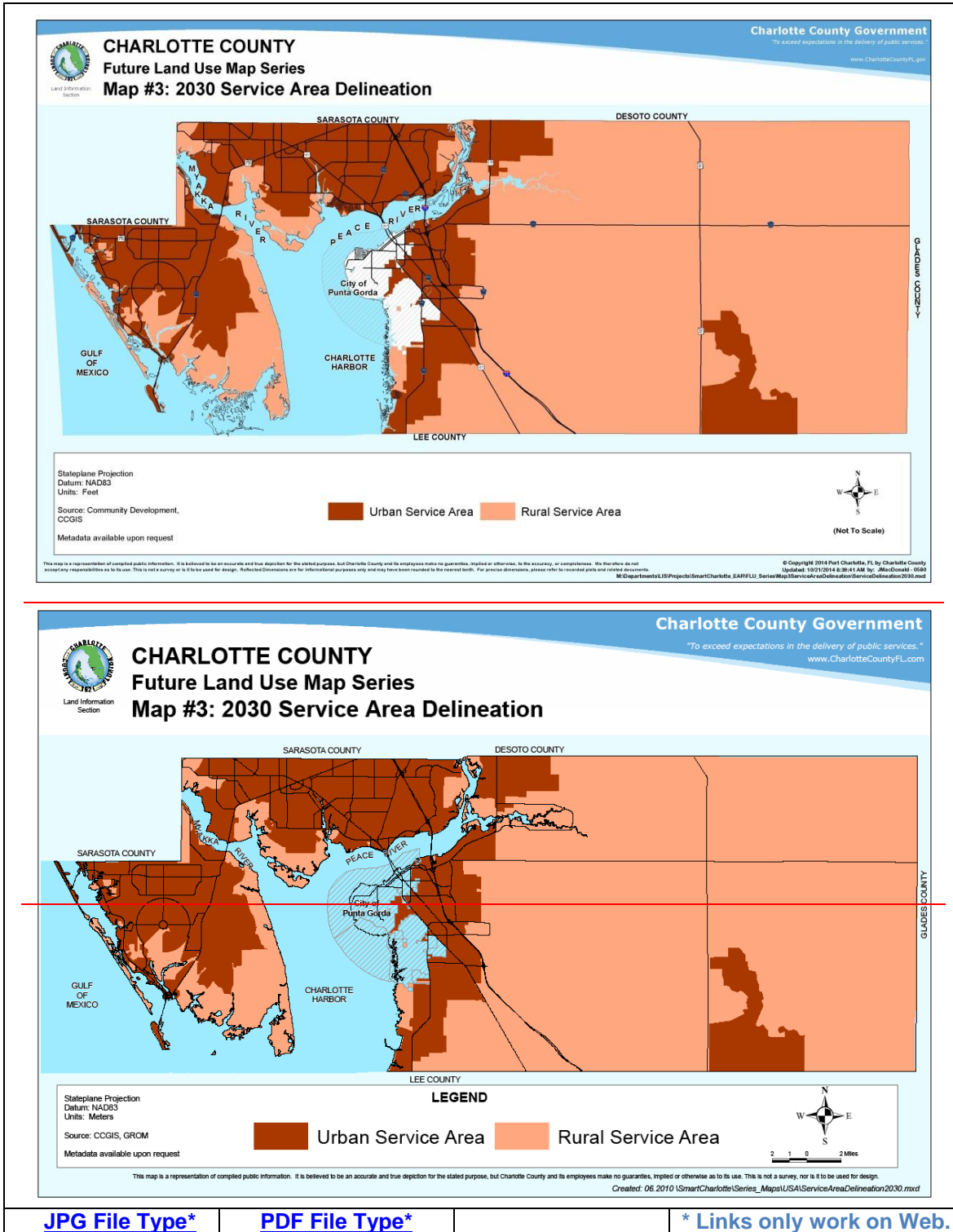
MAP 1A: Charlotte Harbor 2030 FLUM – Detail Map



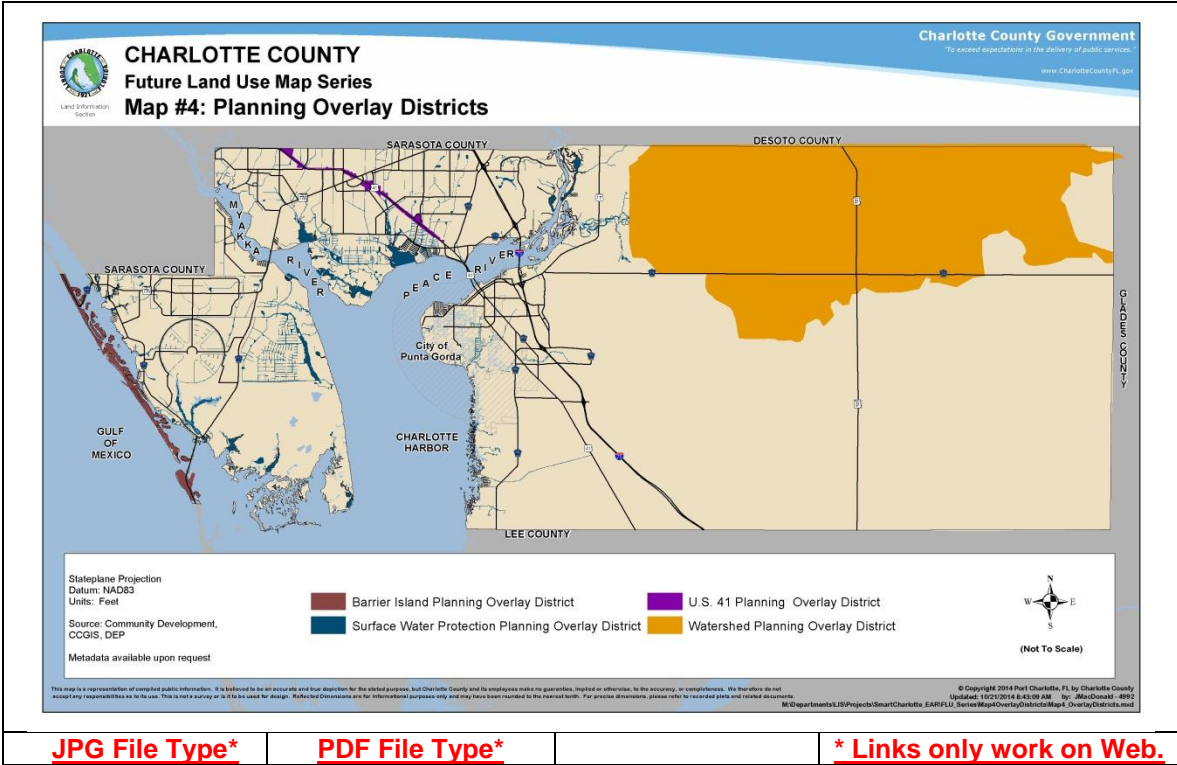
MAP 2: 2050 Framework



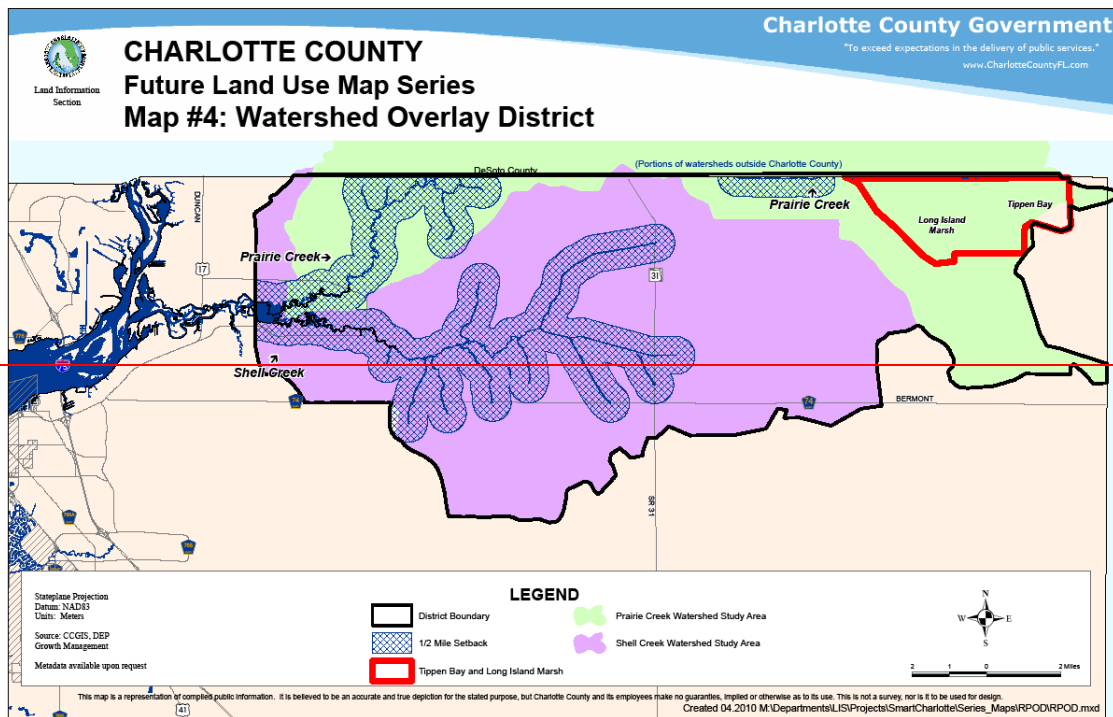
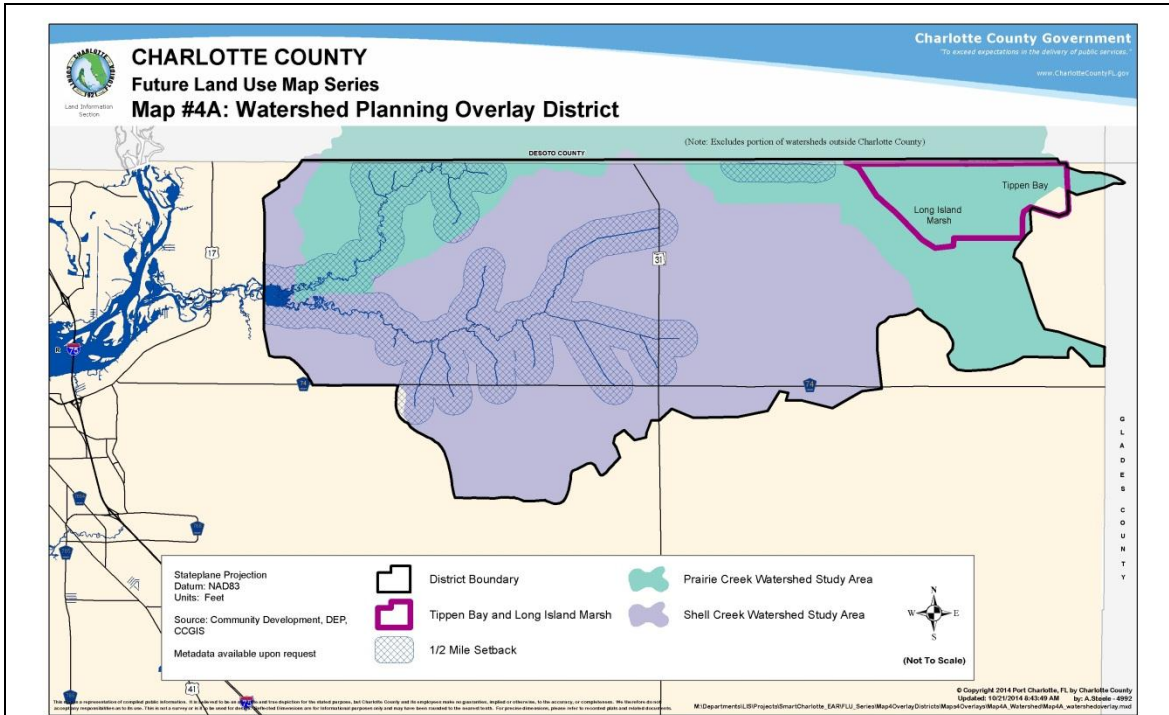
MAP 3: 2030 Service Area Delineation



MAP 4: Planning Overlay Districts



MAP 4A: Watershed Planning Overlay District

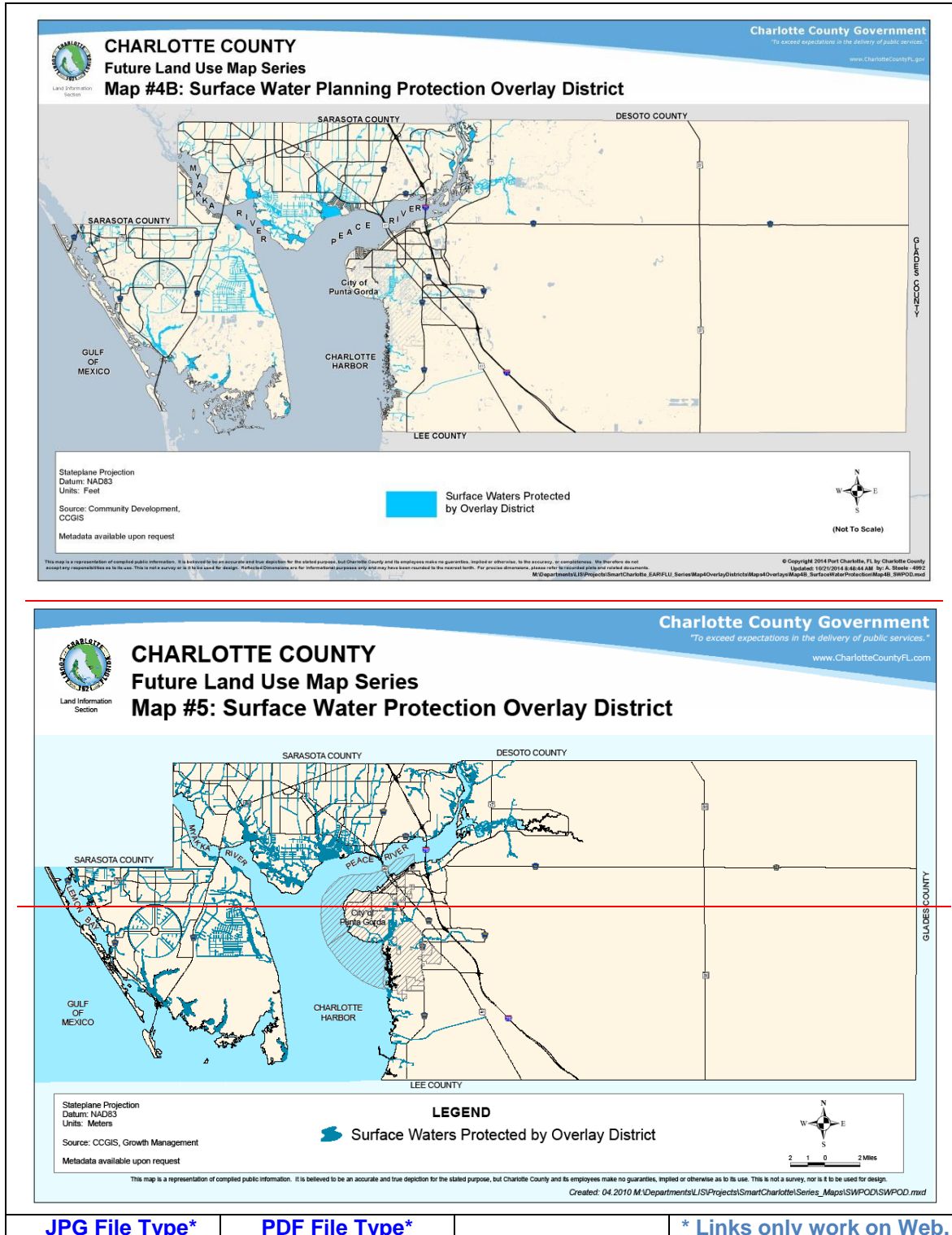


[JPG File Type*](#)

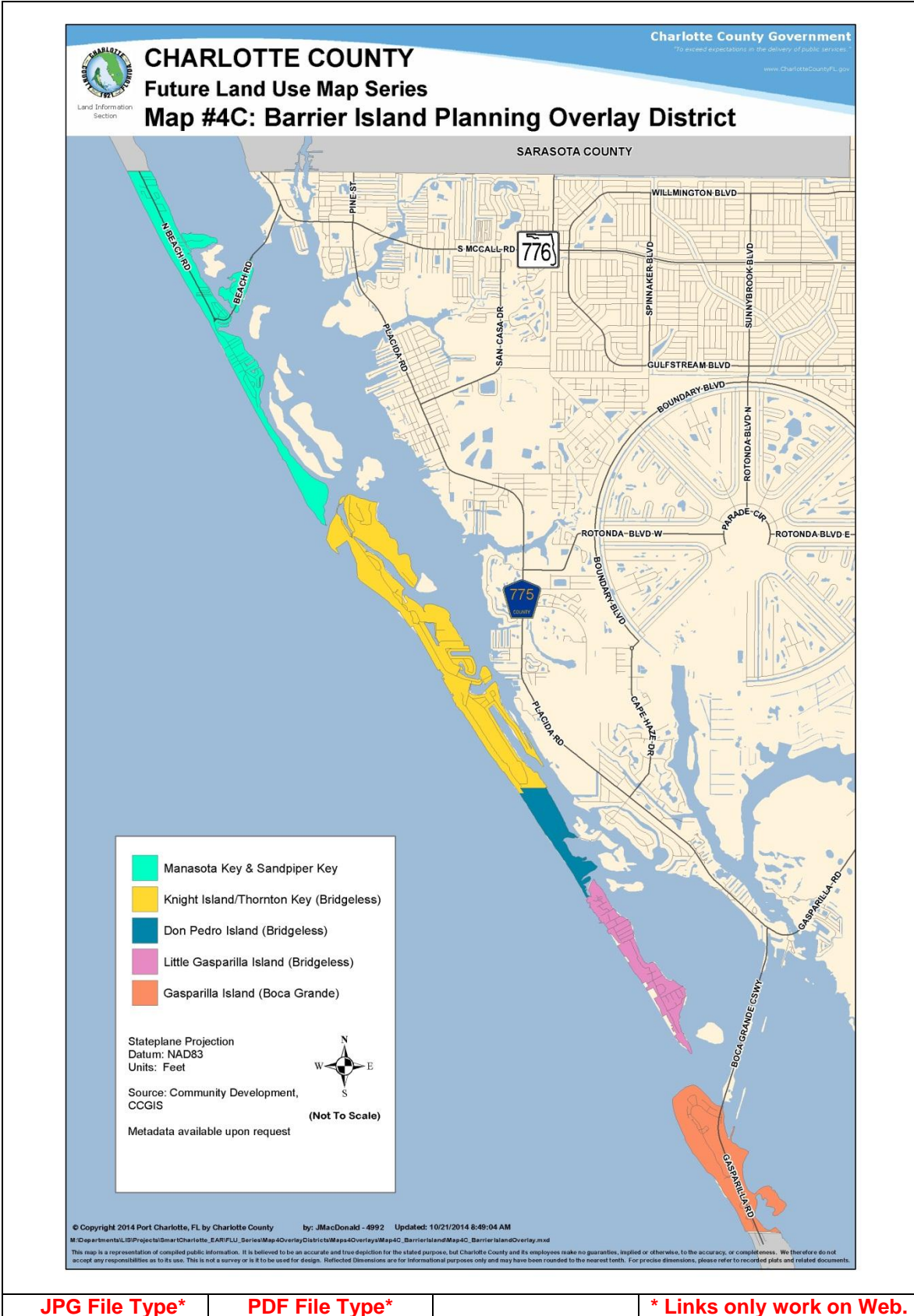
[PDF File Type*](#)

* Links only work on Web.

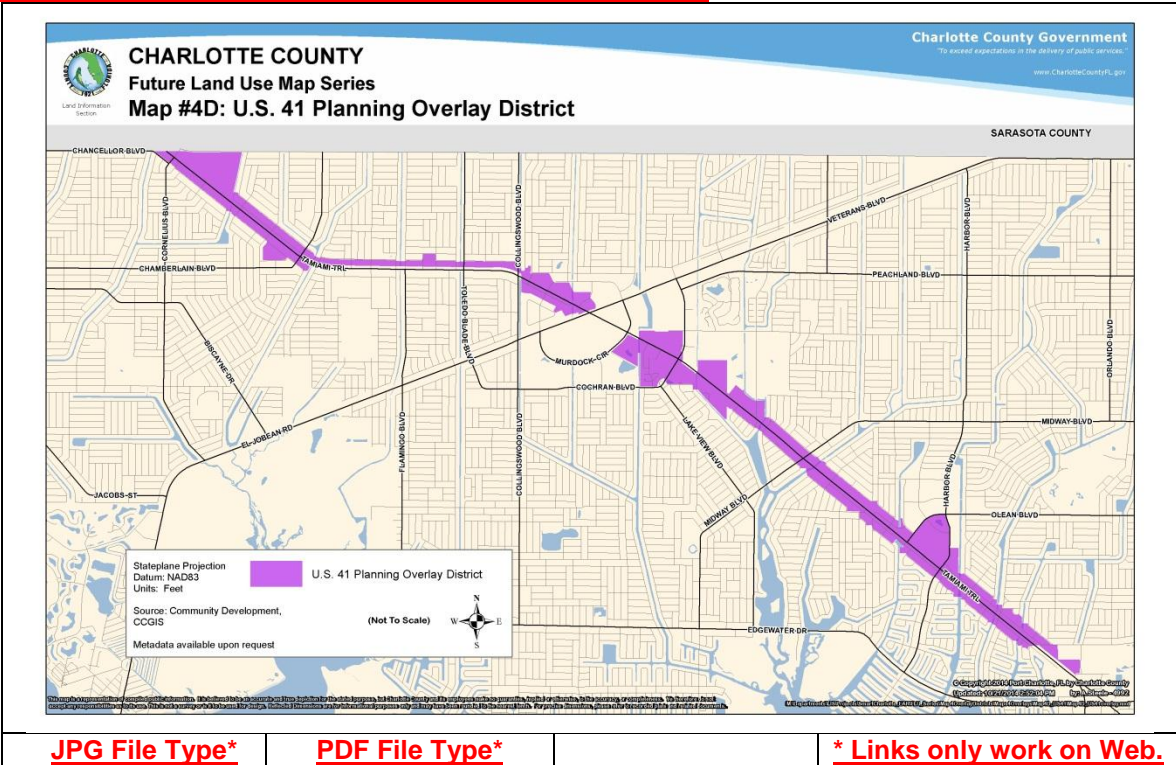
MAP 54B: Surface Water Planning Protection Overlay District



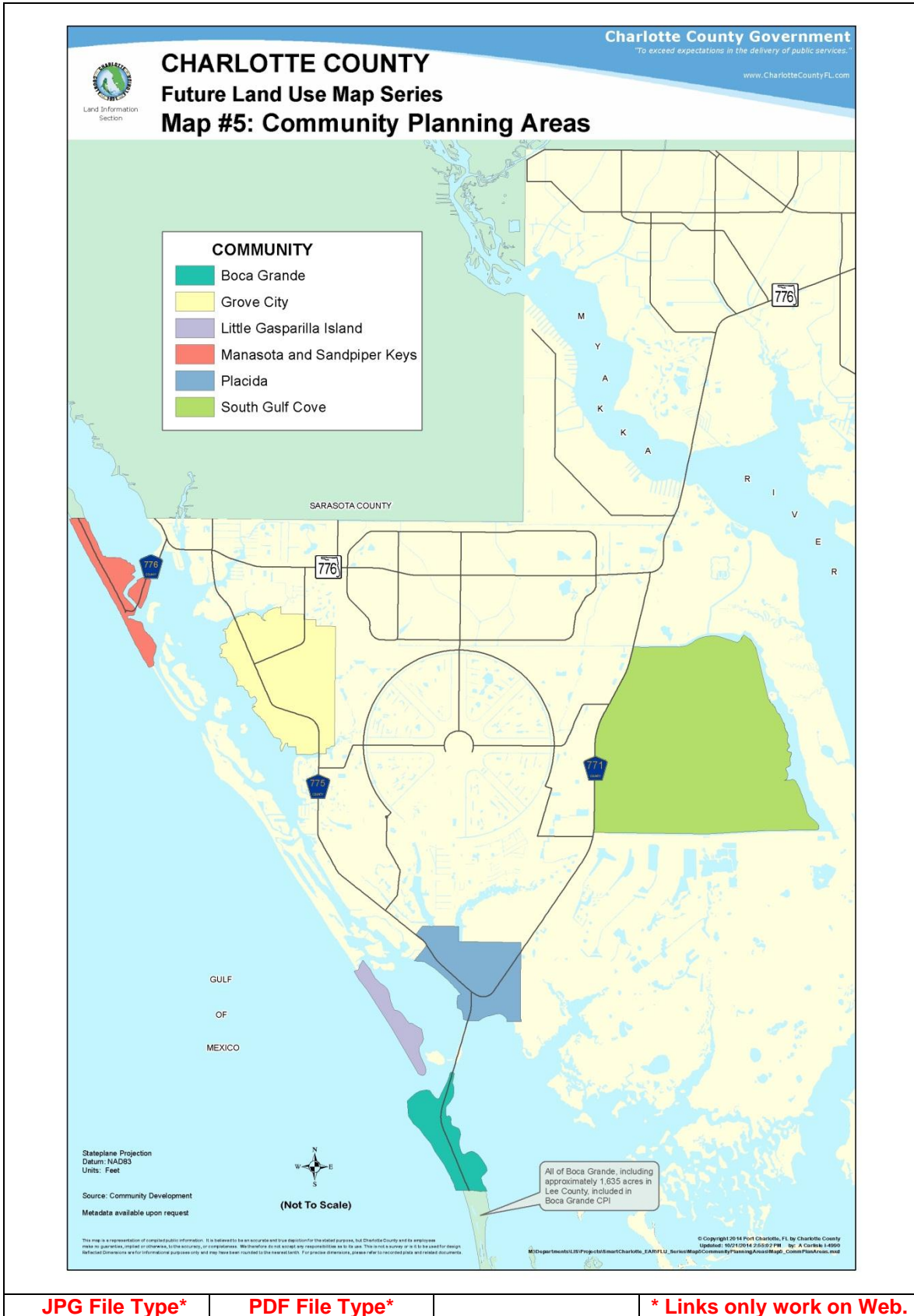
MAP 4C: Barrier Island Planning Overlay District



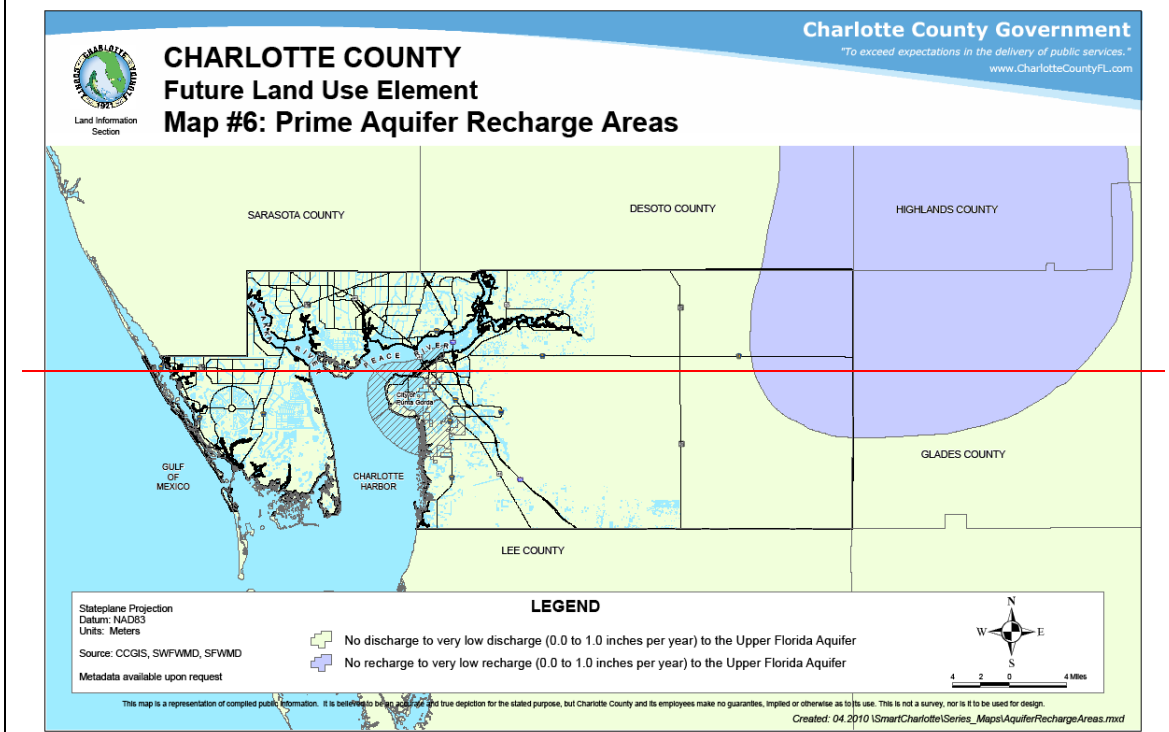
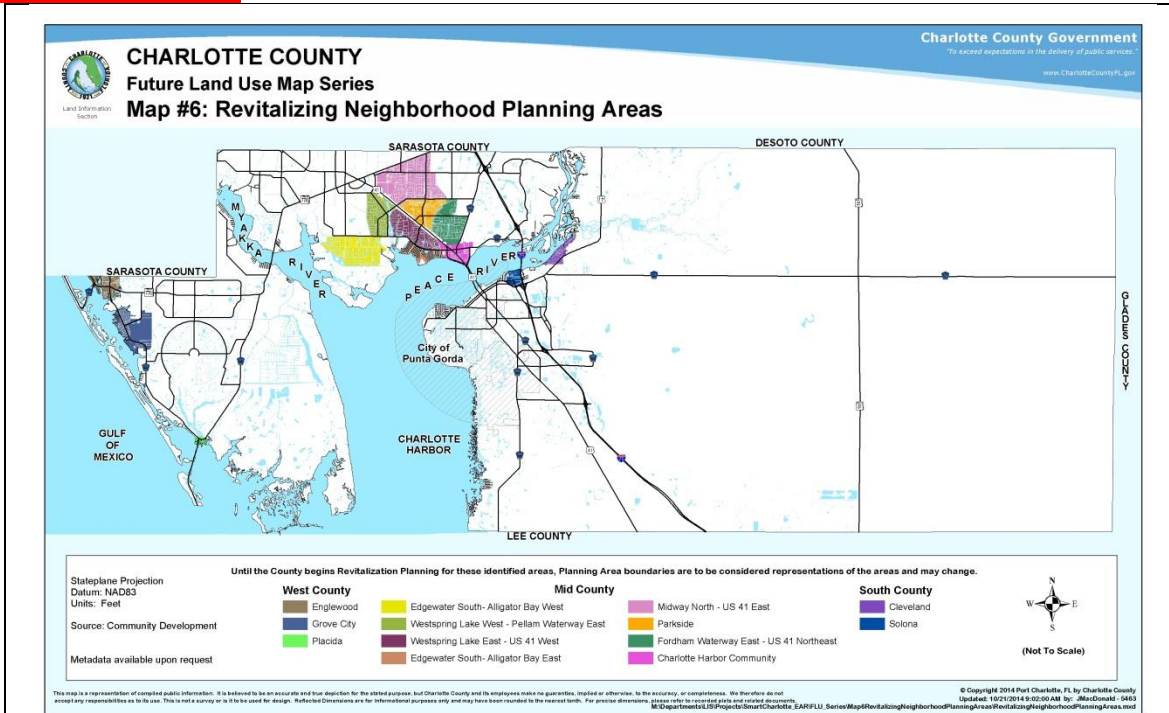
MAP 4D: U.S. 41 Planning Overlay District



MAP 5: Community Planning Areas



MAP 6: Prime Aquifer Recharge Area Revitalizing Neighborhood Planning Areas

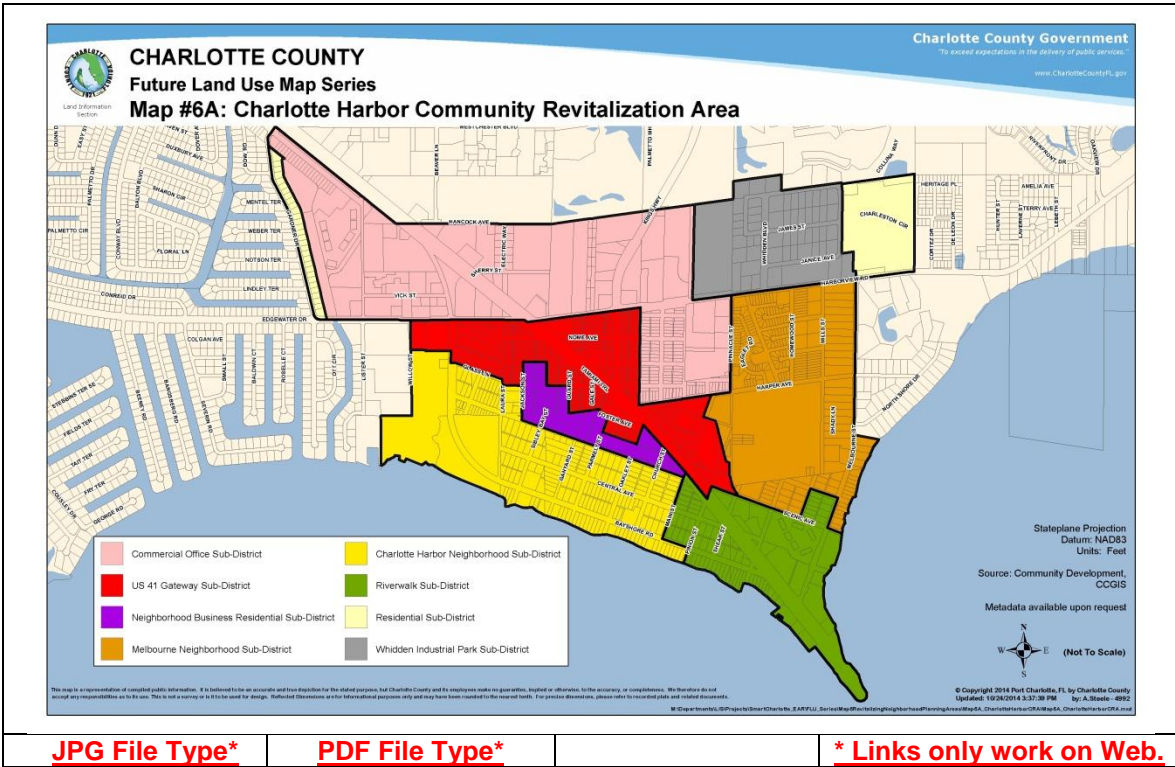


[JPG File Type*](#)

[PDF File Type*](#)

* Links only work on Web.

MAP 6A: Charlotte Harbor Community Revitalizing Area

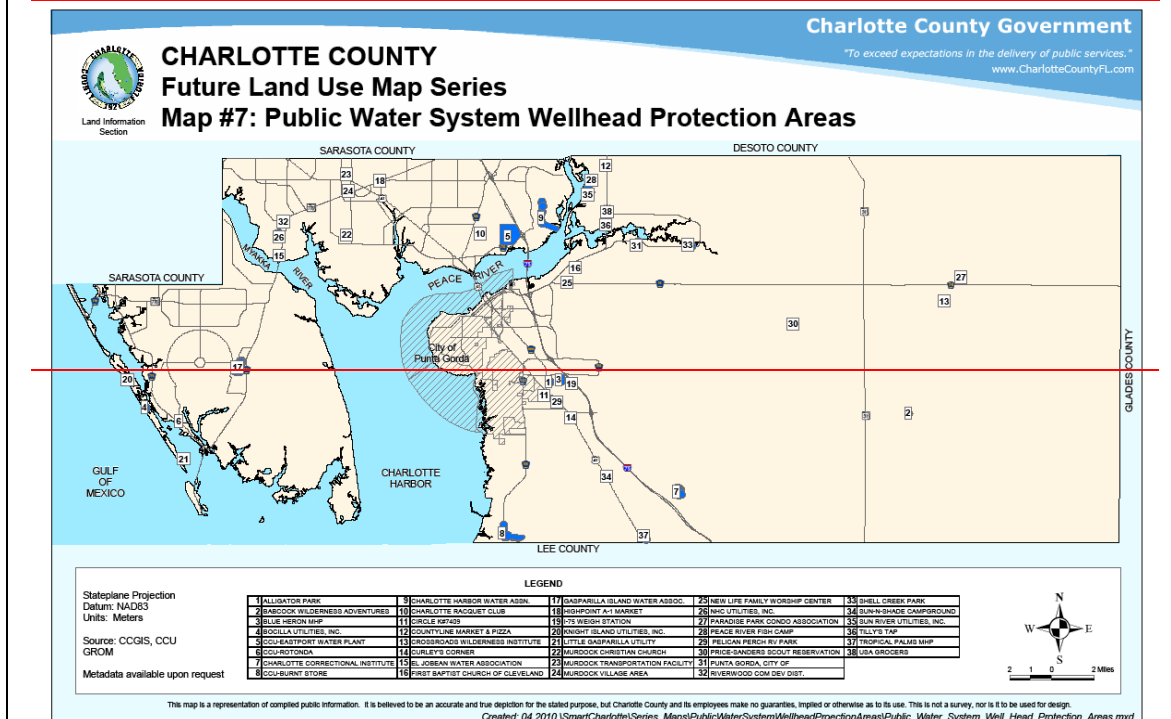
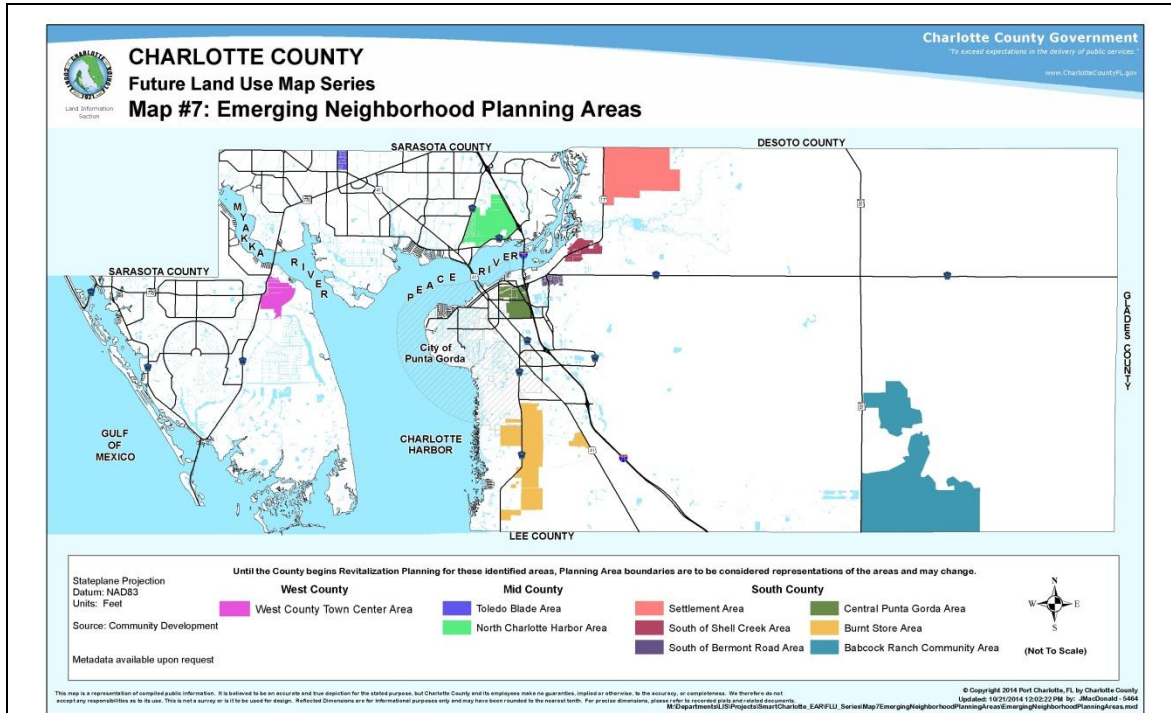


[JPG File Type*](#)

[PDF File Type*](#)

[* Links only work on Web.](#)

**MAP 7: Public Water System Wellhead Protection Areas
Emerging Neighborhood Planning Areas**

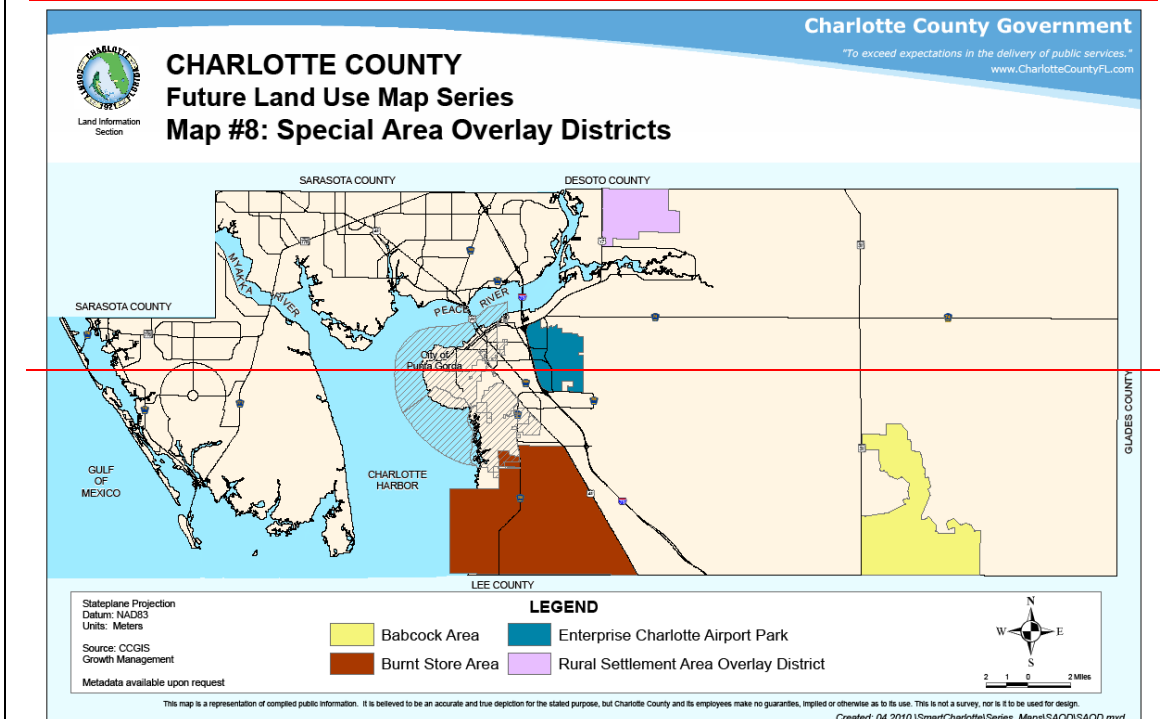
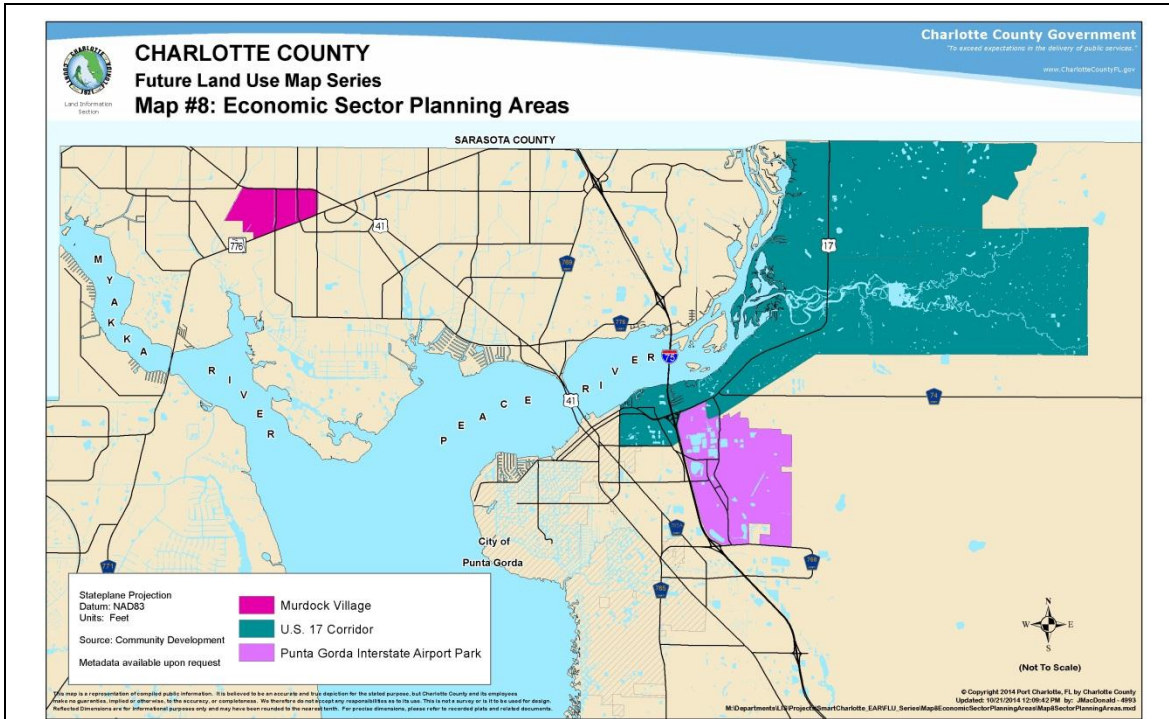


[JPG File Type*](#)

[PDF File Type*](#)

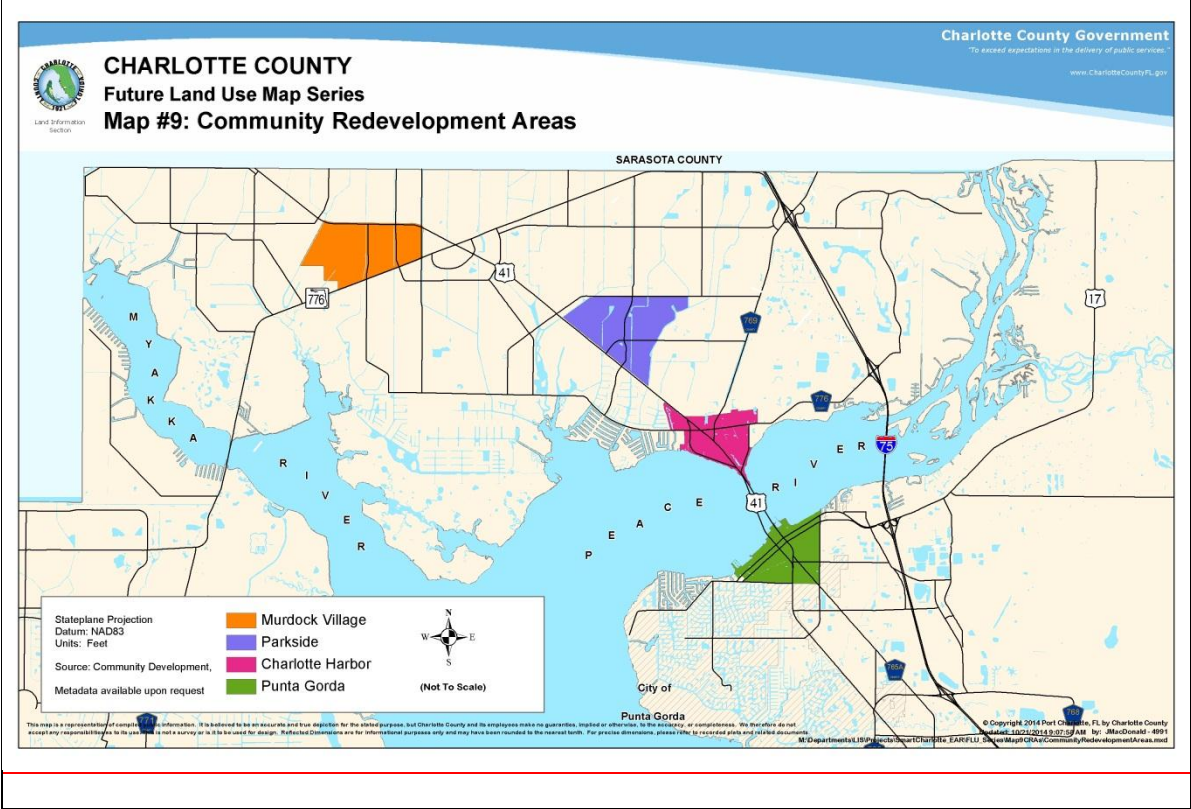
* Links only work on Web.

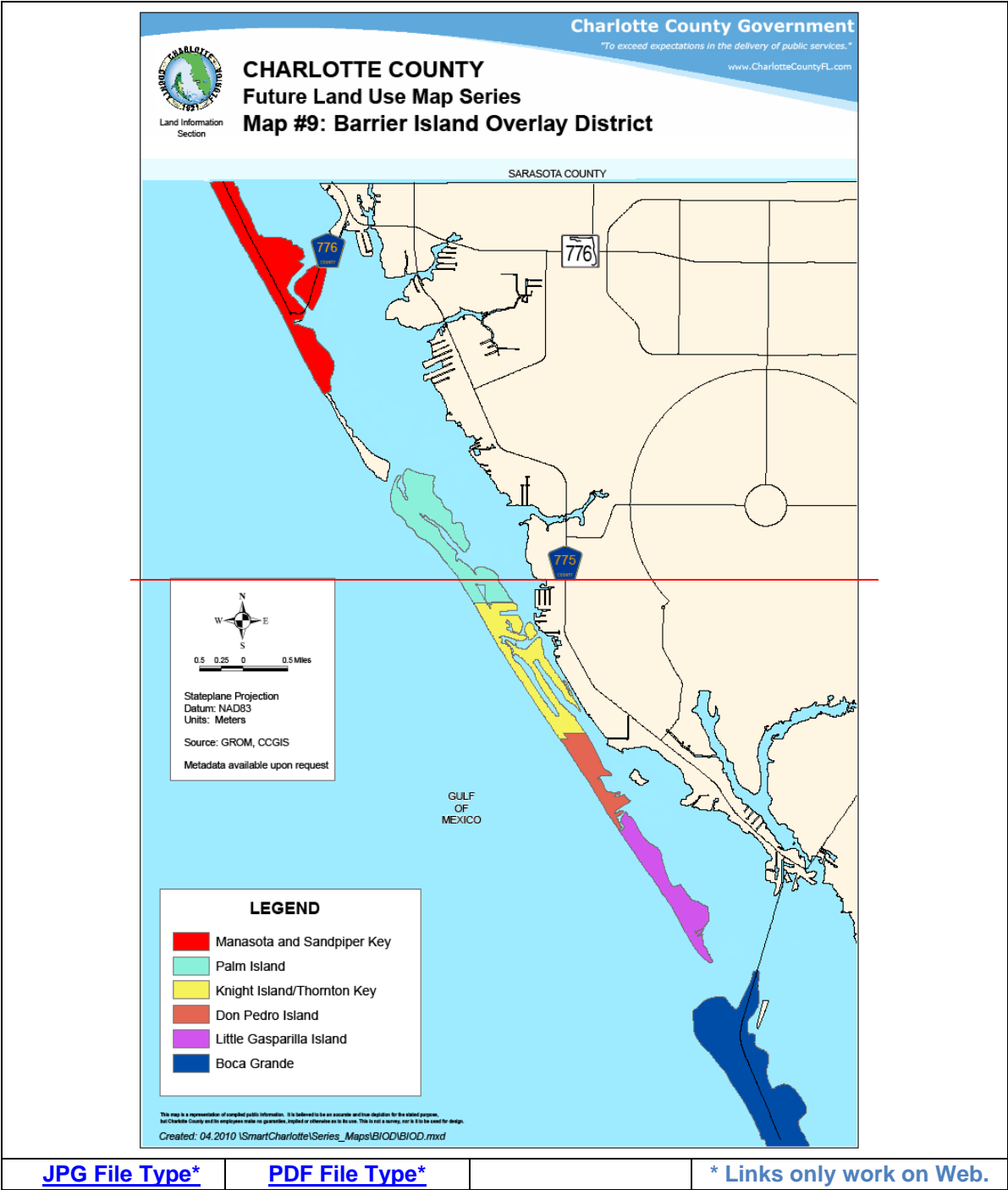
MAP 8: Special Area Overlay Districts Economic Sector Planning Areas



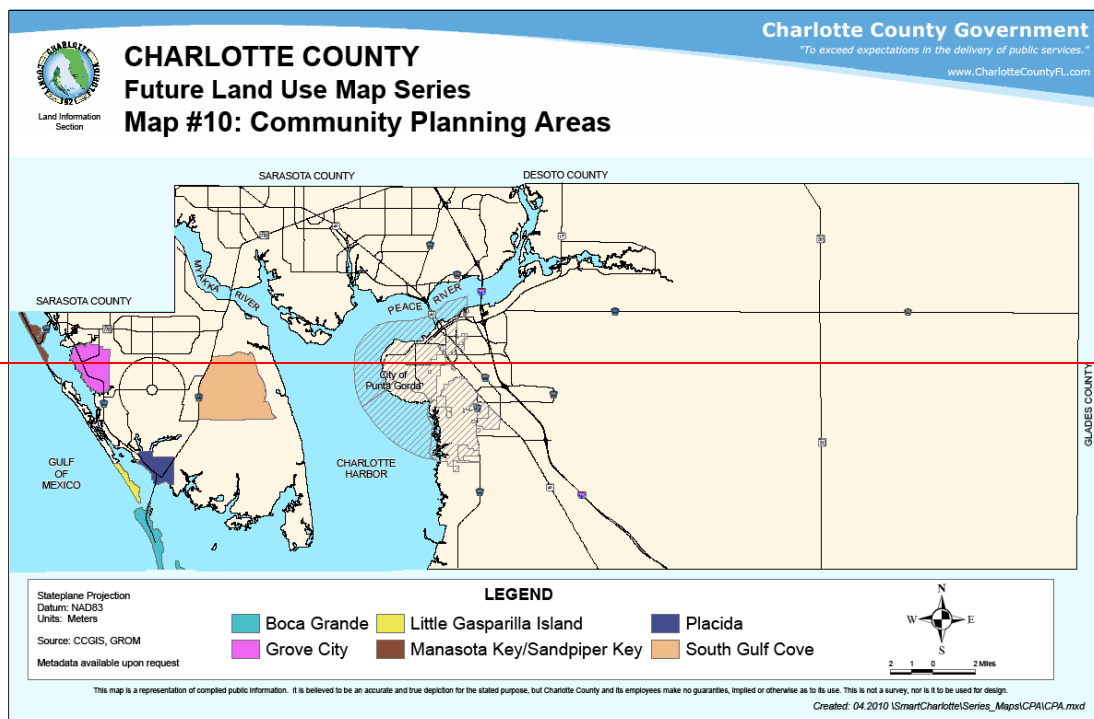
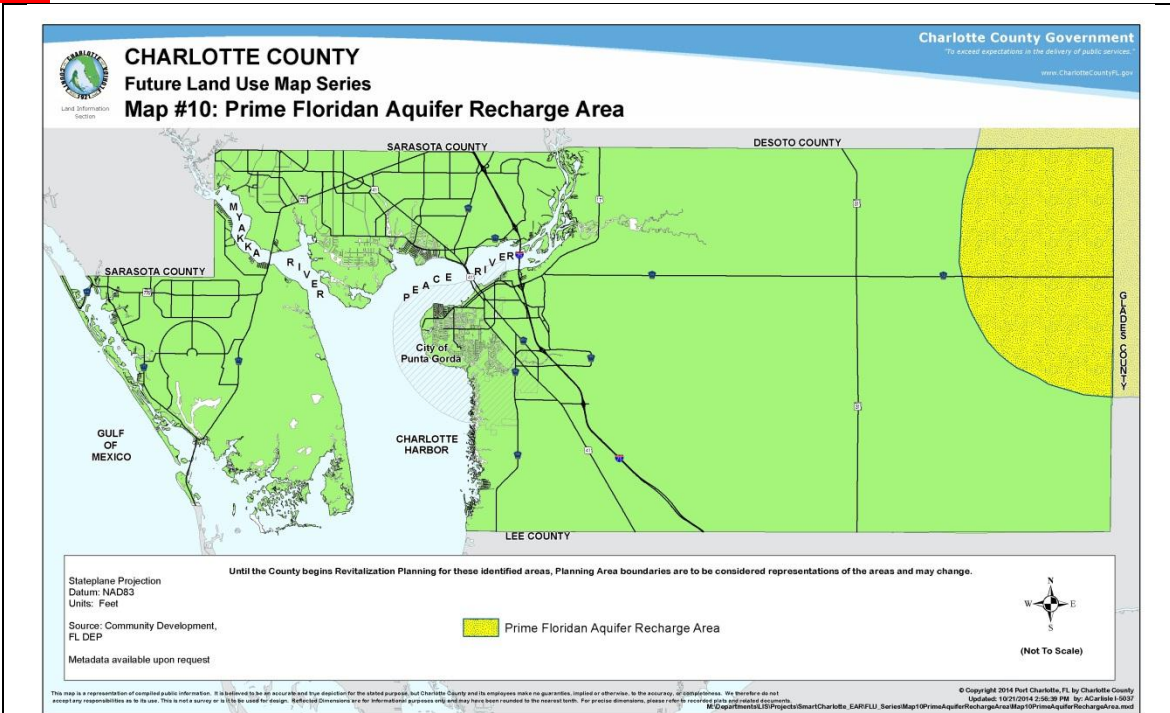
[JPG File Type*](#) [PDF File Type*](#) * Links only work on Web.

MAP 9: Barrier Island Overlay District Community Redevelopment Areas





MAP 10: Community Planning Areas Prime Floridan Aquifer Recharge Area

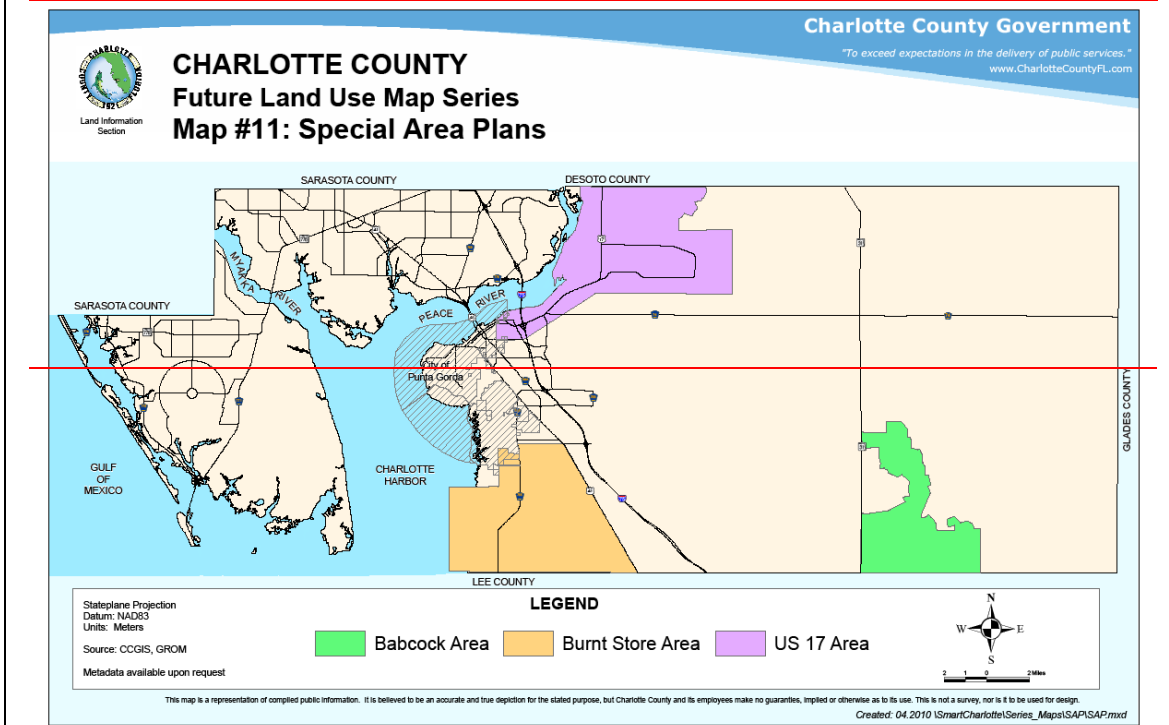
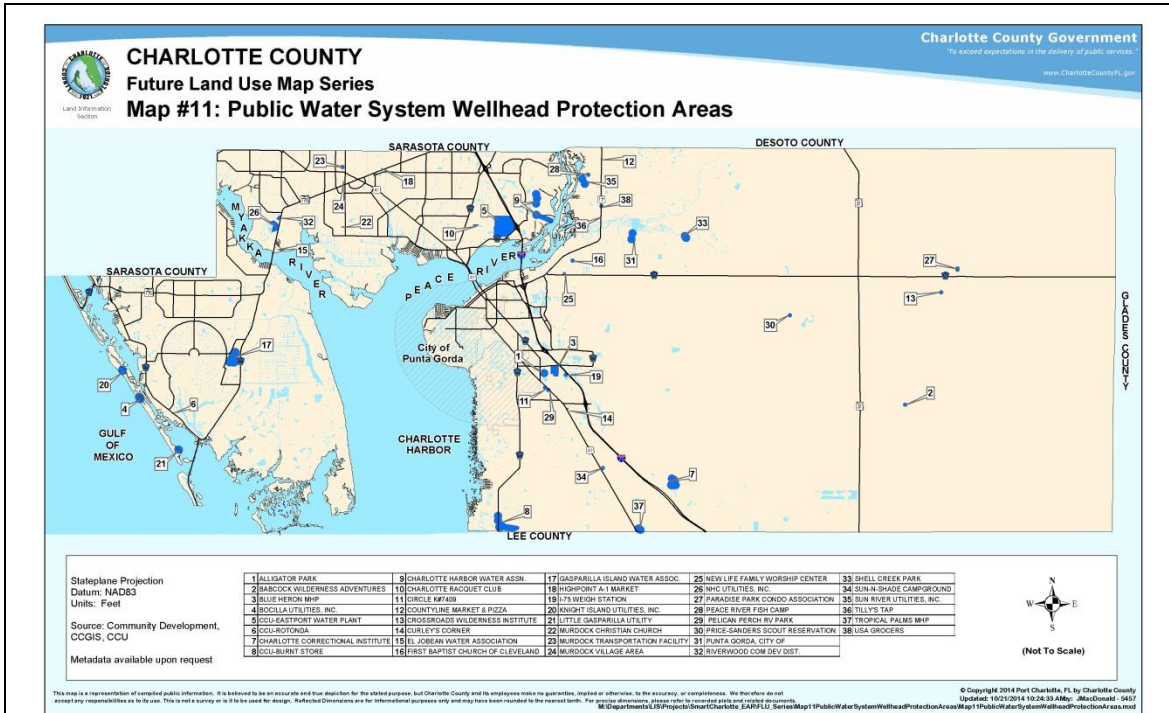


[JPG File Type*](#)

[PDF File Type*](#)

* Links only work on Web.

MAP 11: Special Area Plans Public Water System Wellhead Protection Areas

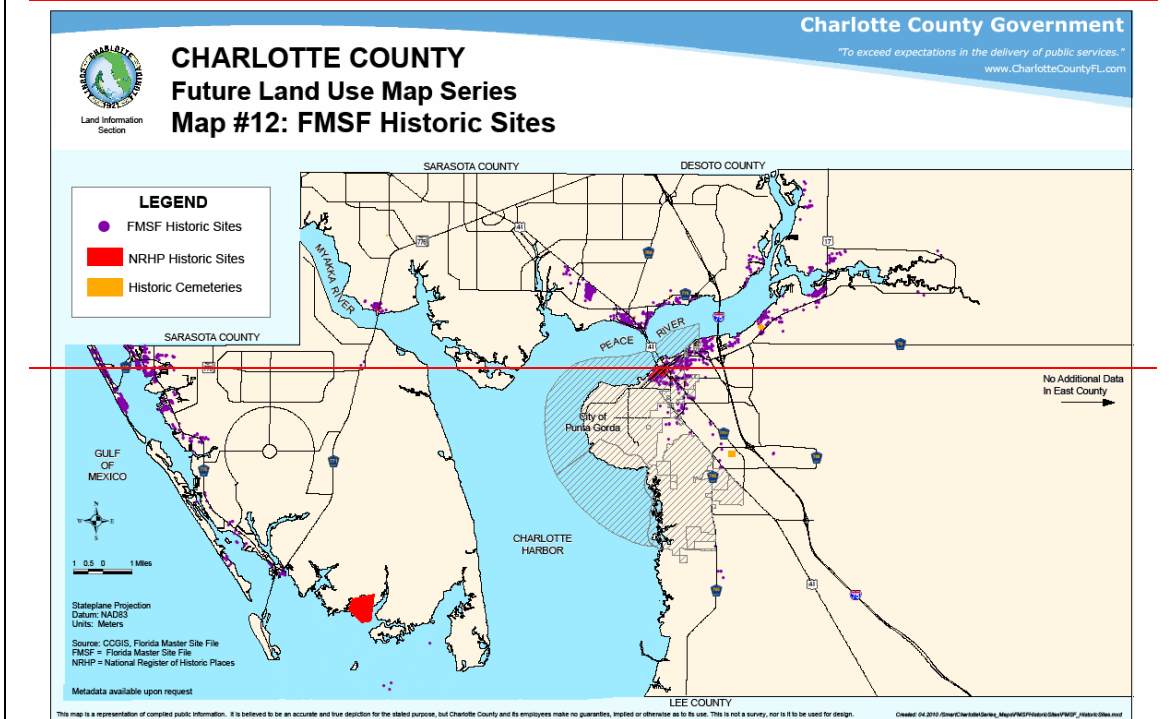
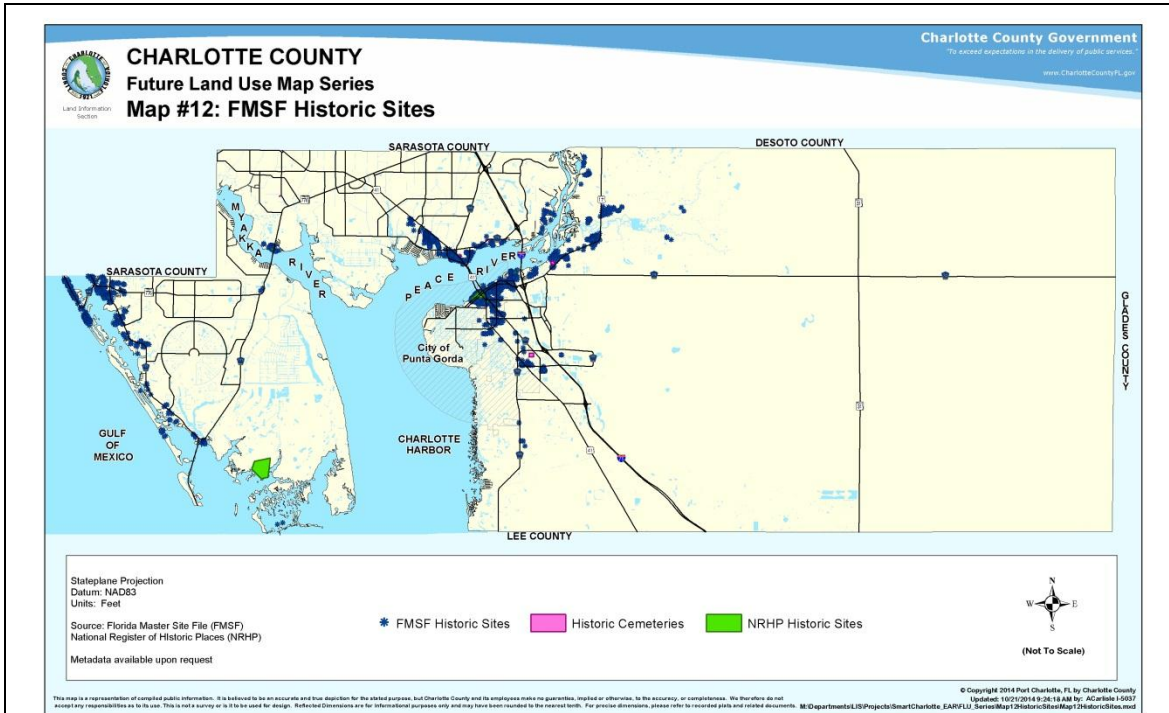


[JPG File Type*](#)

[PDF File Type*](#)

* Links only work on Web.

MAP 12: FMSF Historic Sites

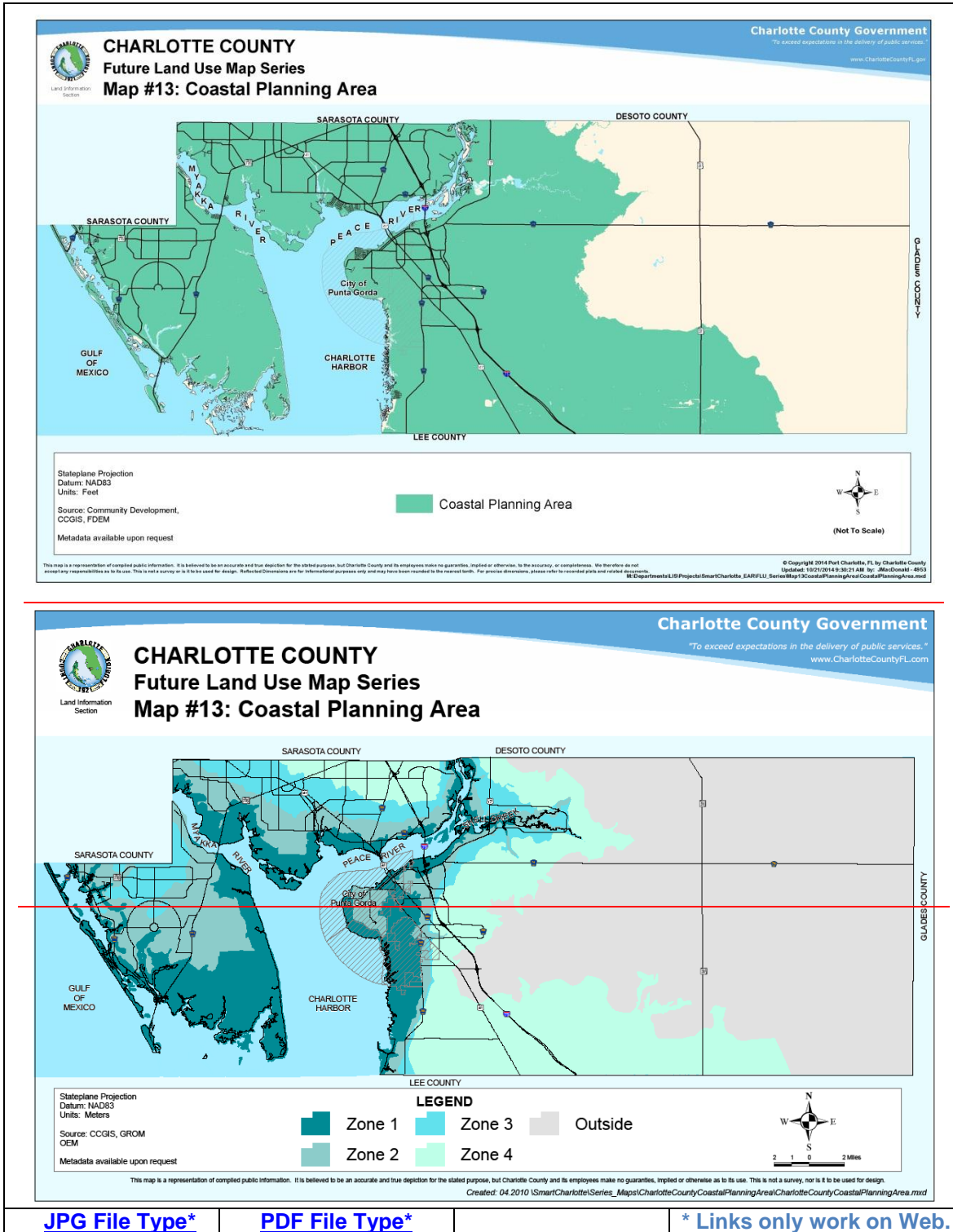


[JPG File Type*](#)

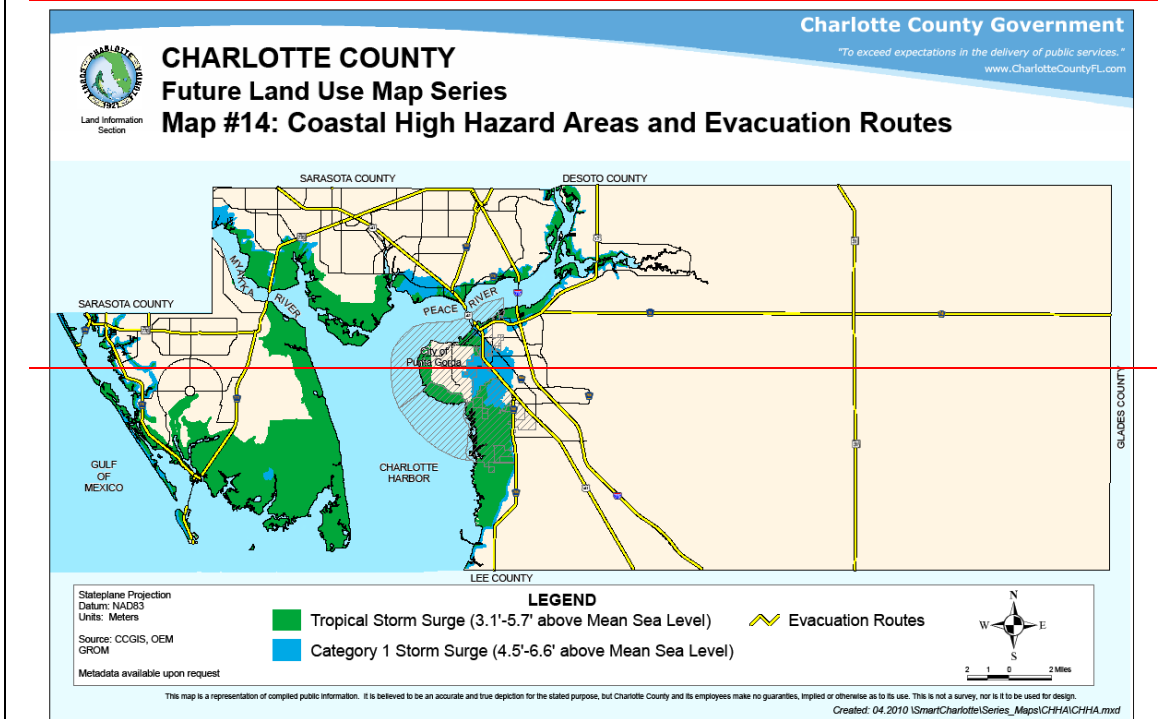
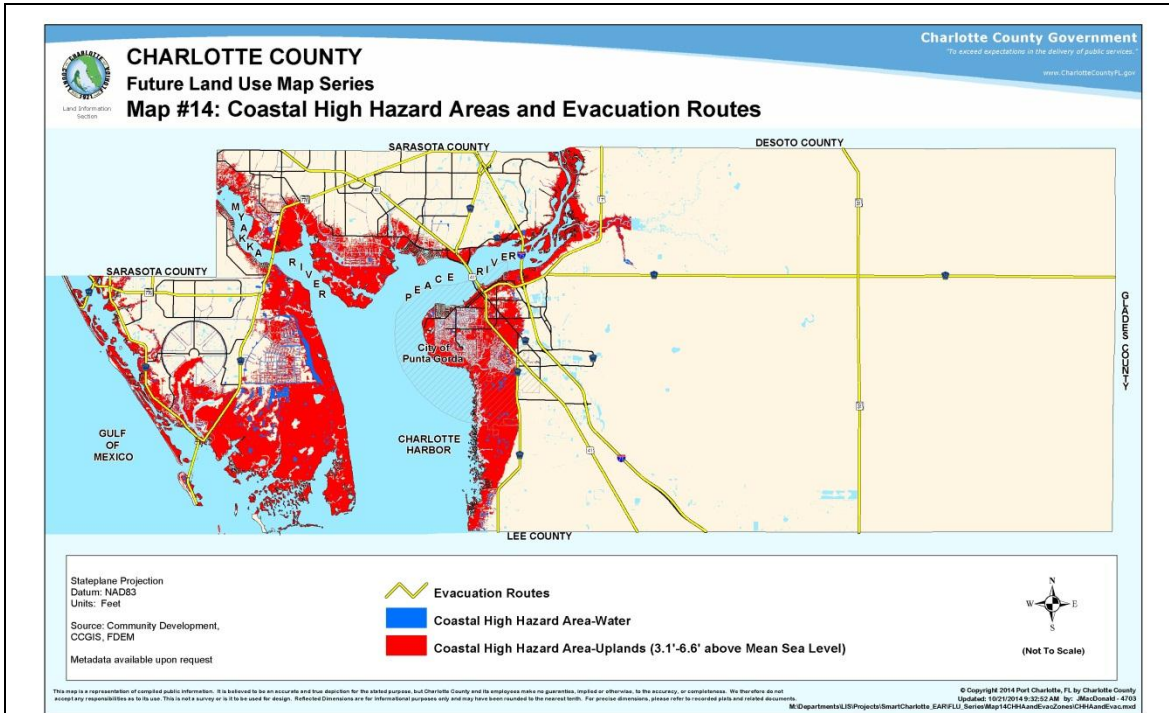
[PDF File Type*](#)

* Links only work on Web.

MAP 13: Coastal Planning Area



MAP 14: Coastal High Hazard Areas and Evacuation Routes

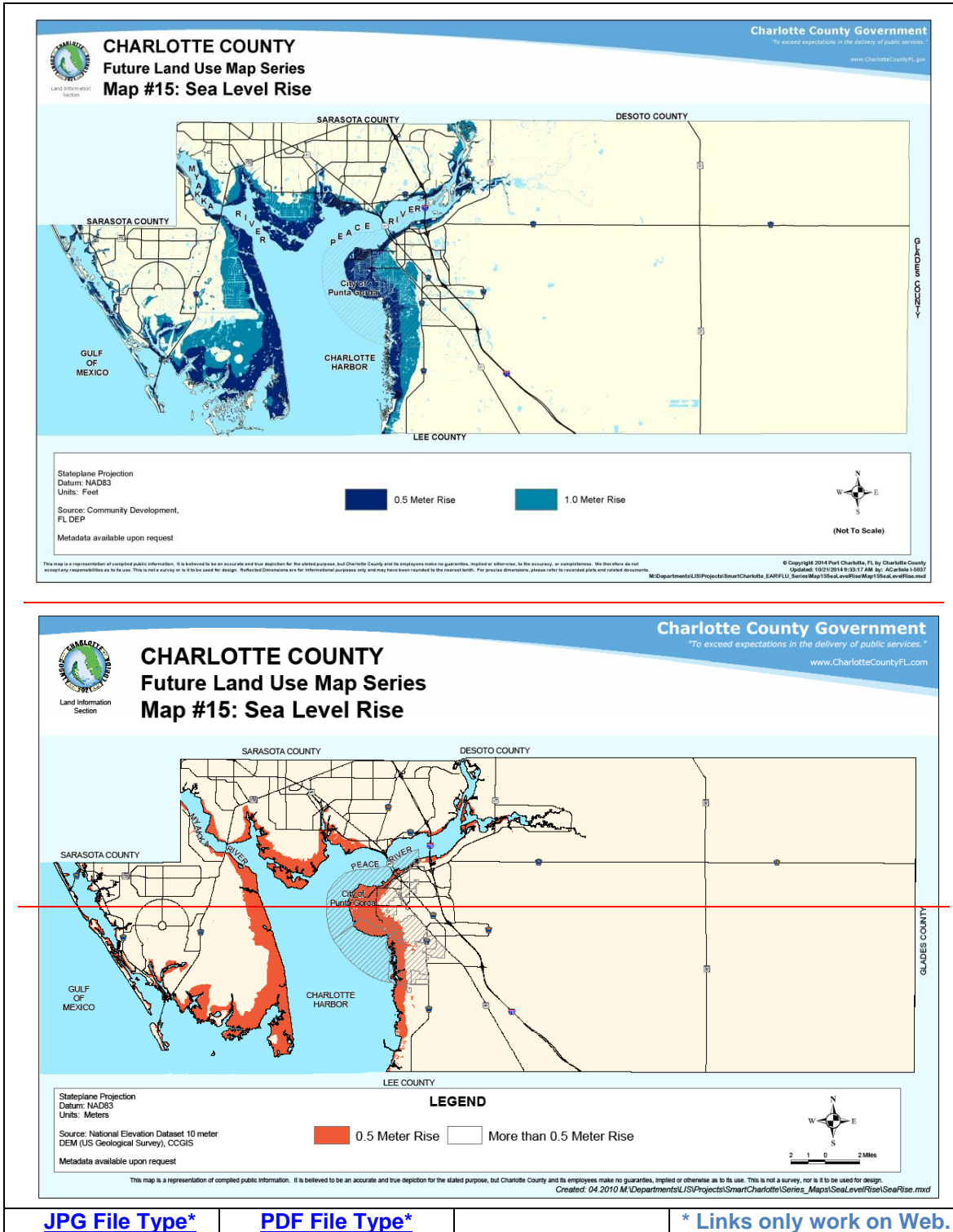


[JPG File Type*](#)

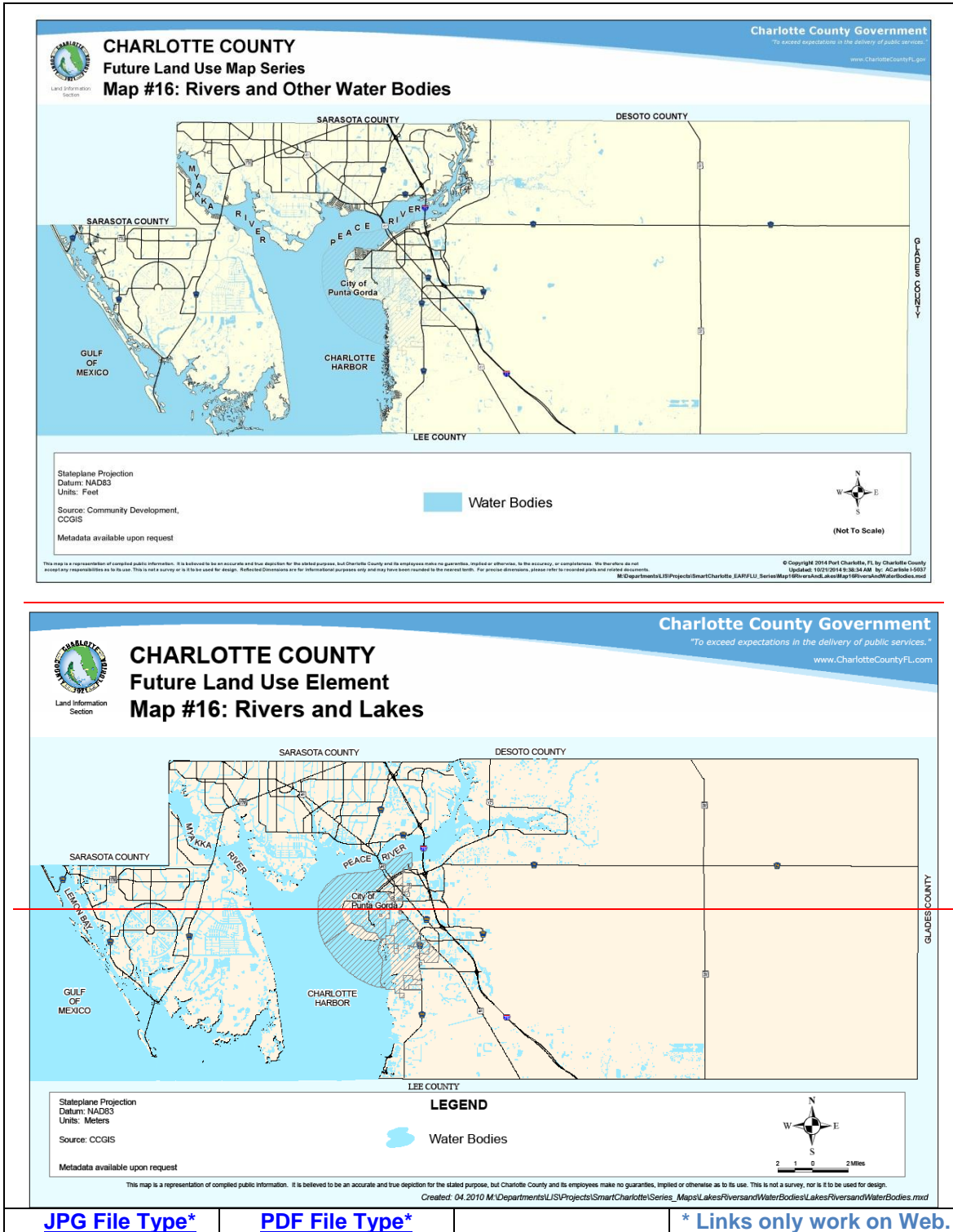
[PDF File Type*](#)

* Links only work on Web.

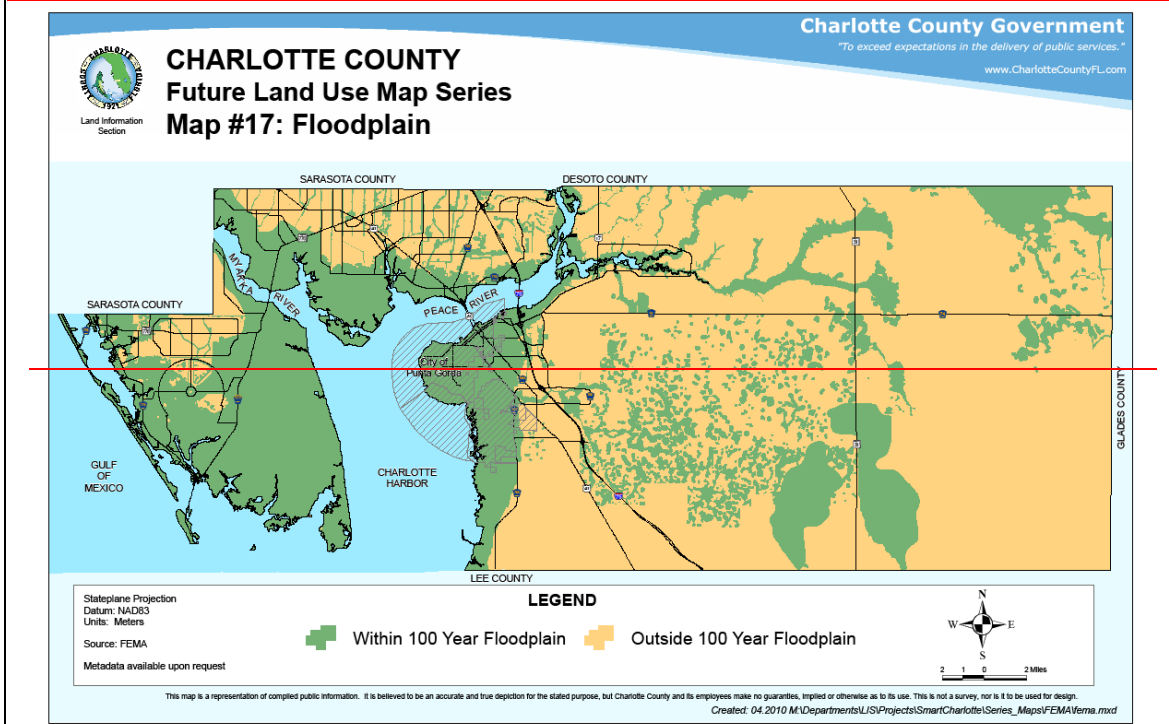
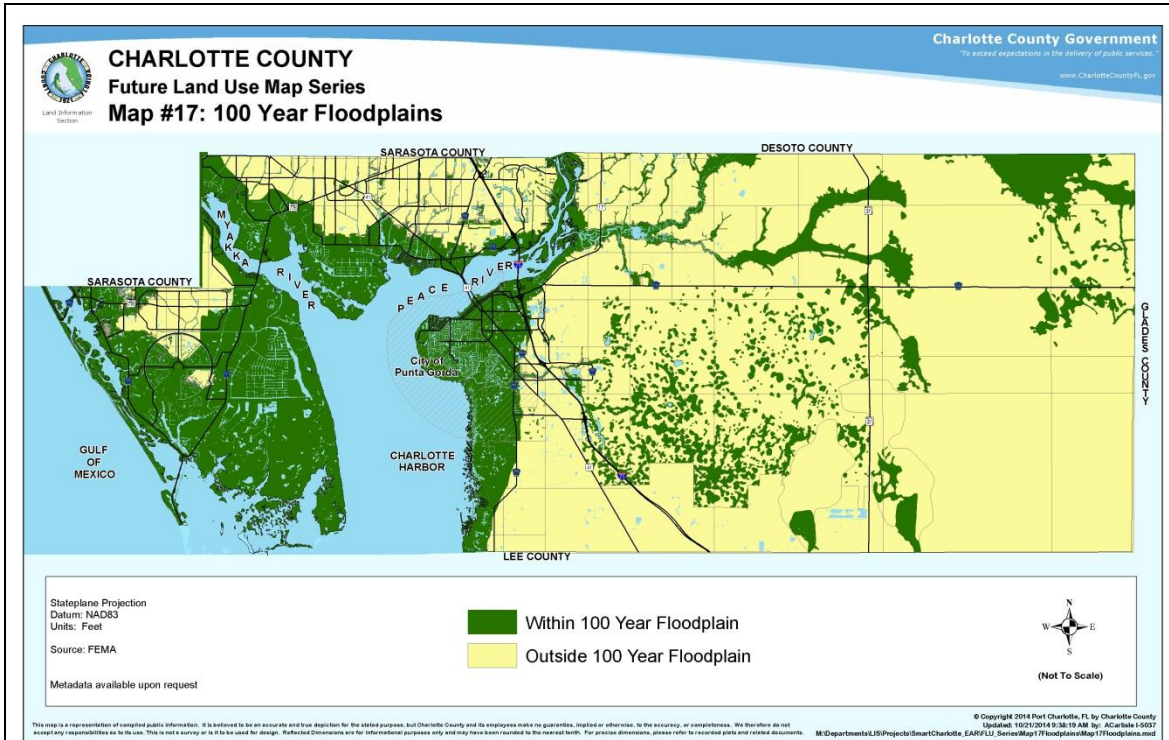
MAP 15: Sea Level Rise



MAP 16: Rivers and LakesOther Water Bodies



MAP 17: 100 Year Floodplains

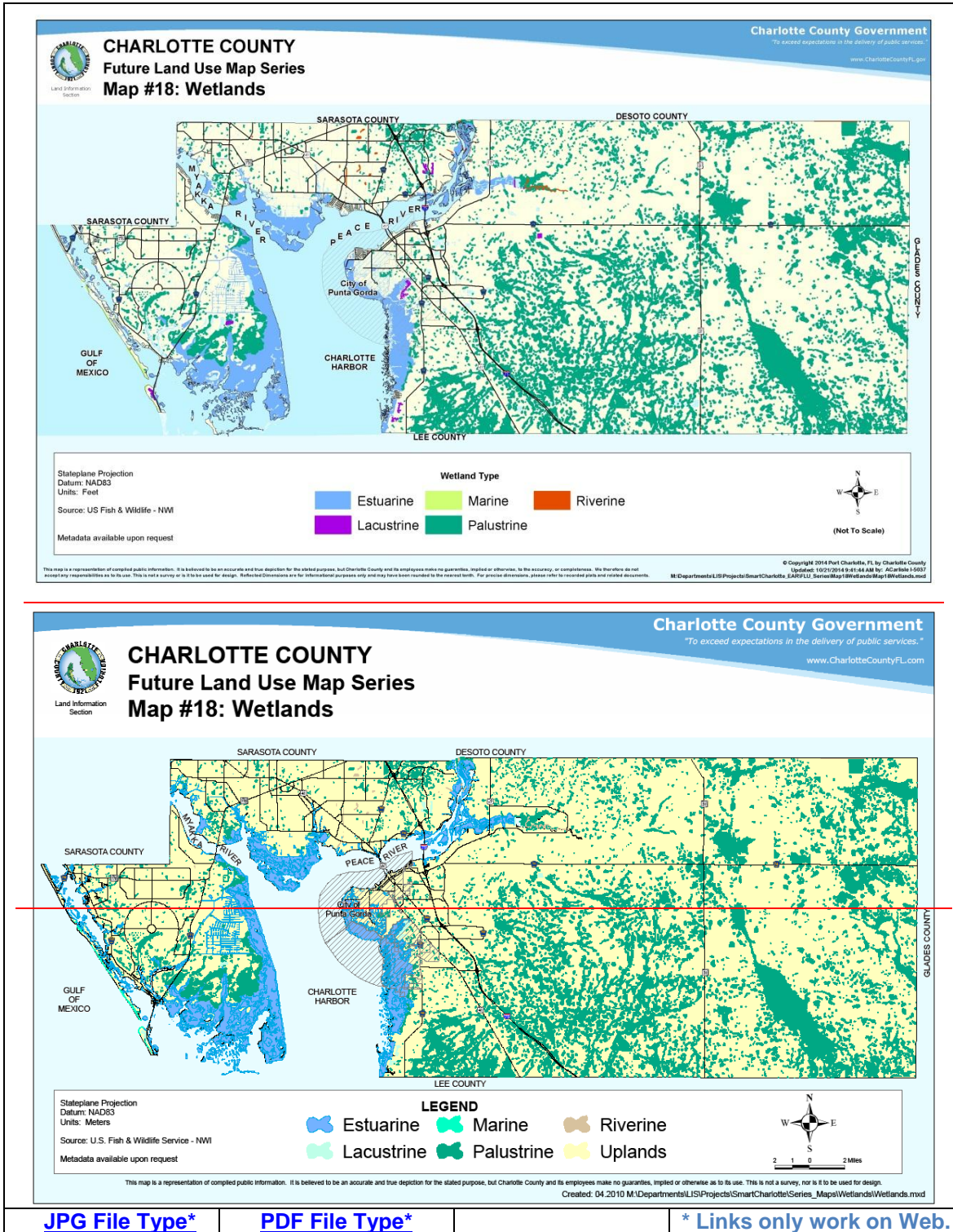


[JPG File Type*](#)

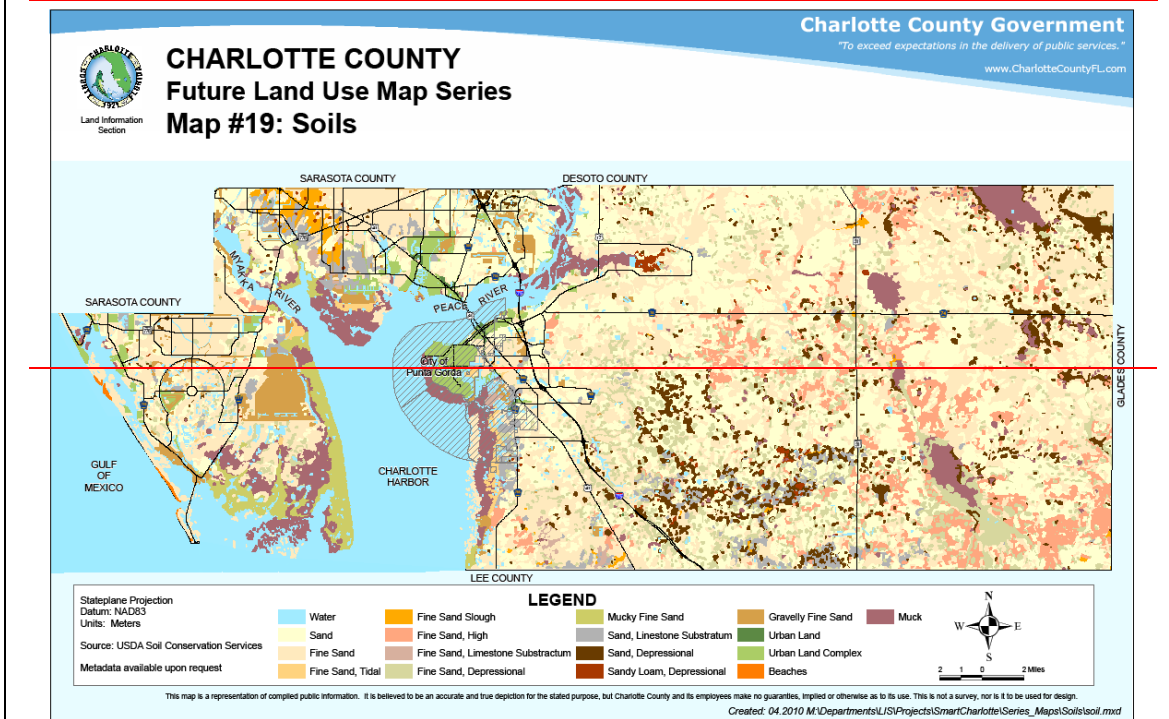
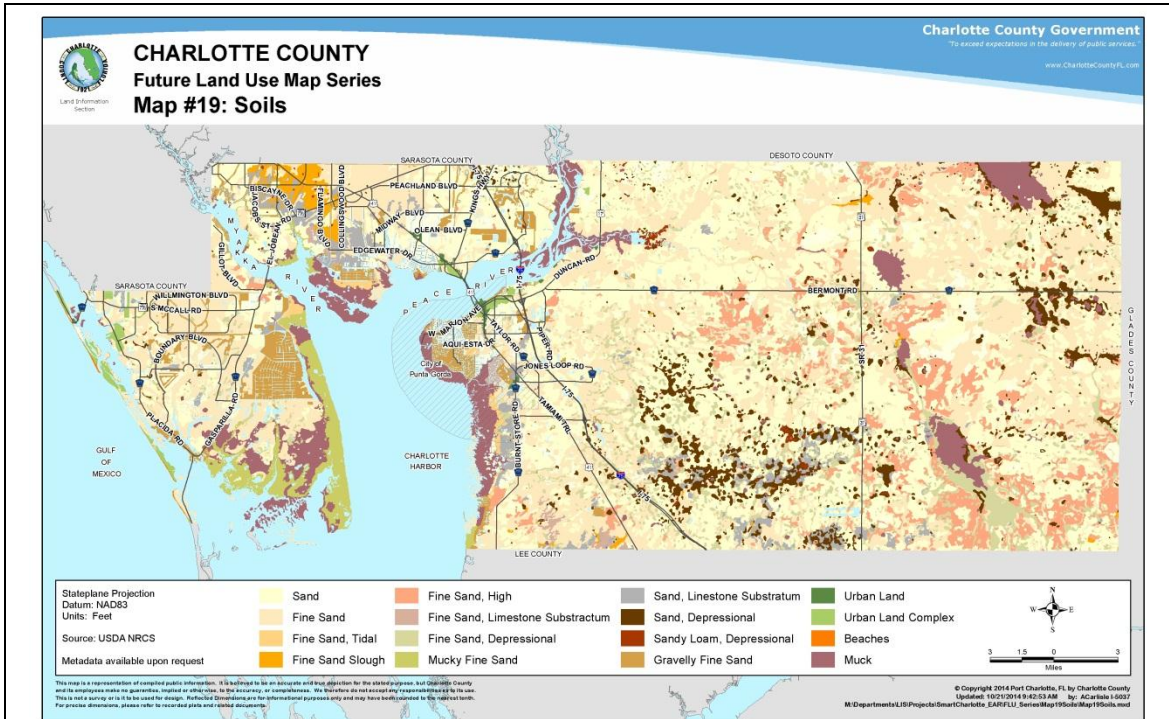
[PDF File Type*](#)

* Links only work on Web.

MAP 18: Wetlands



MAP 19: Soils

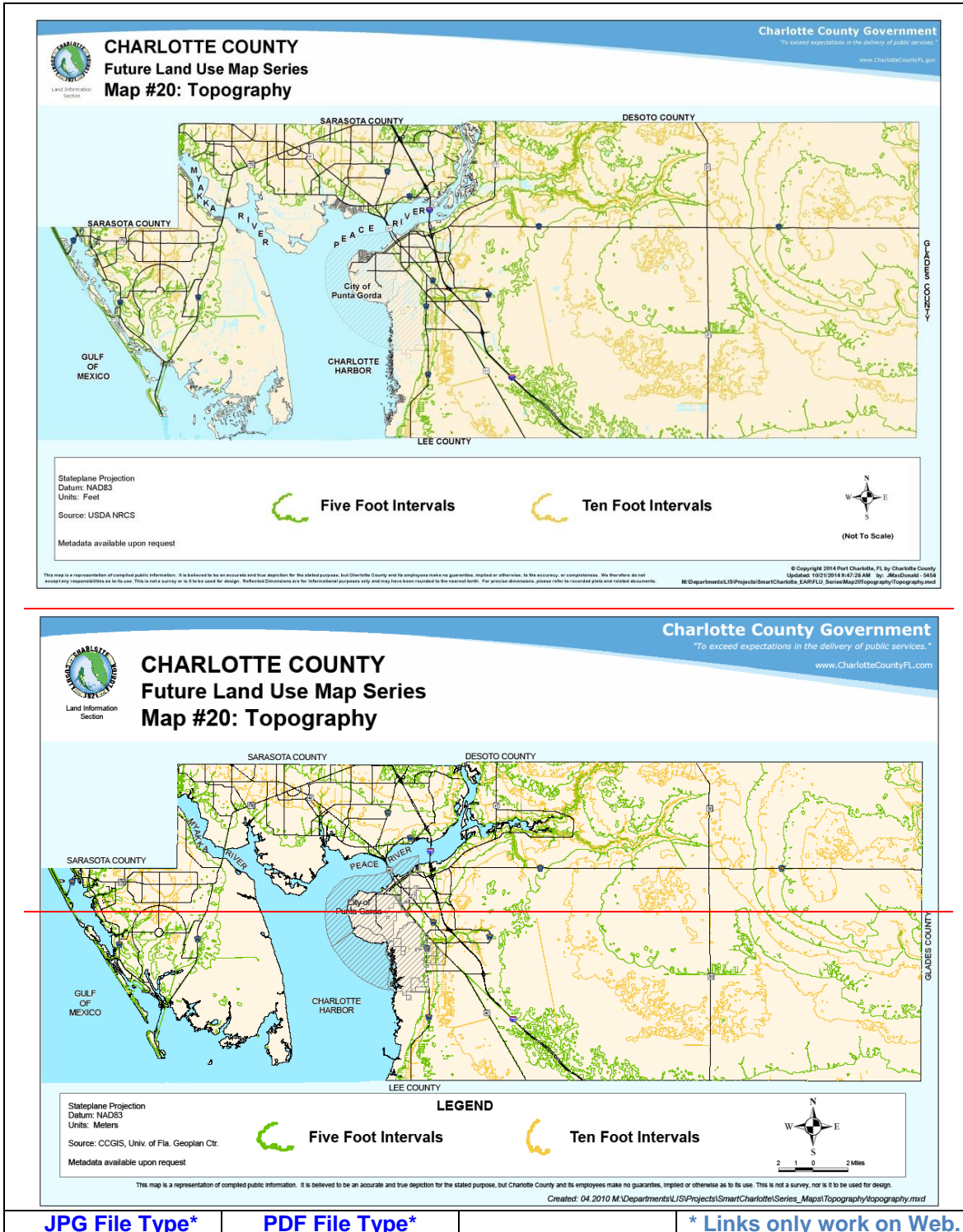


[JPG File Type*](#)

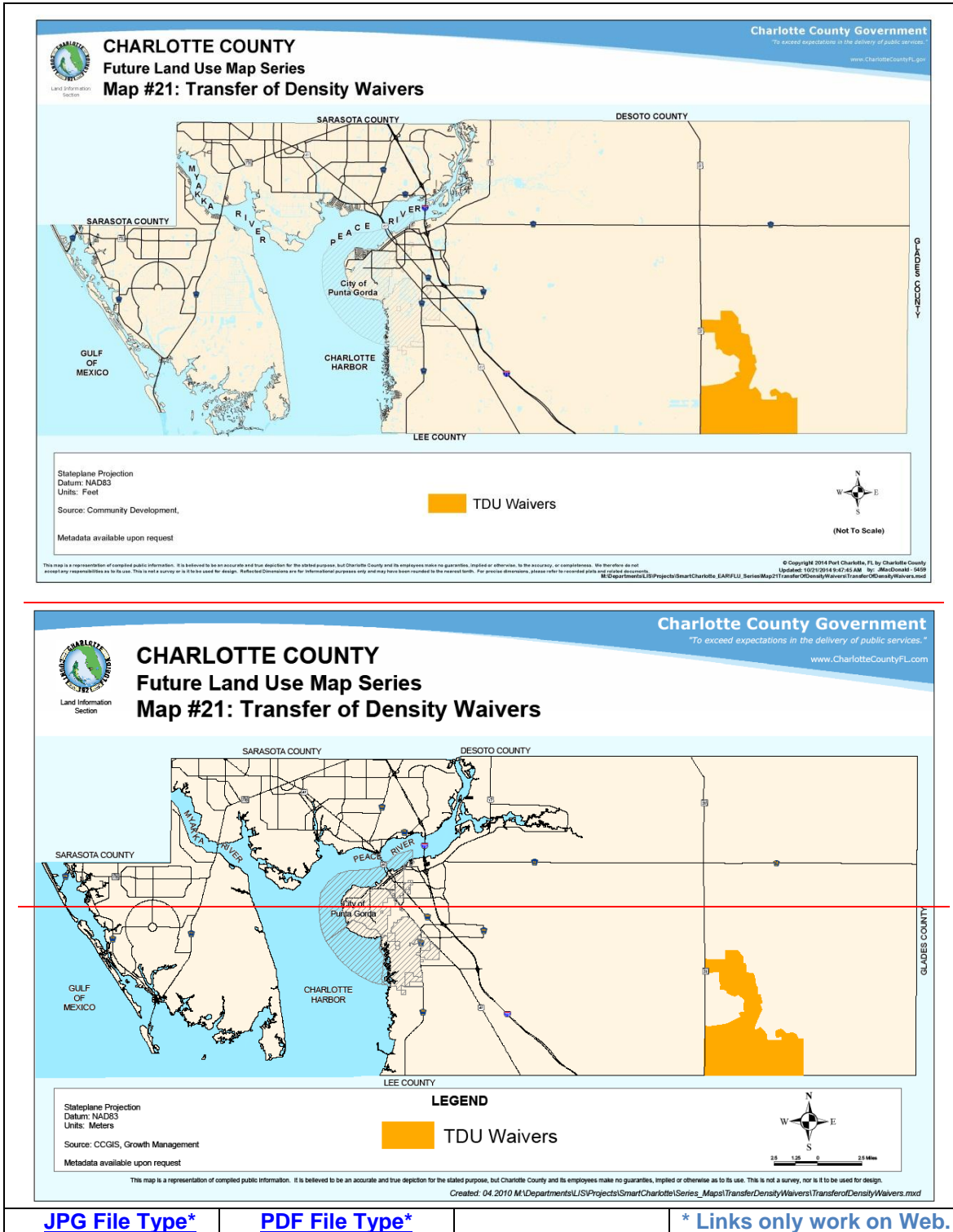
[PDF File Type*](#)

* Links only work on Web.

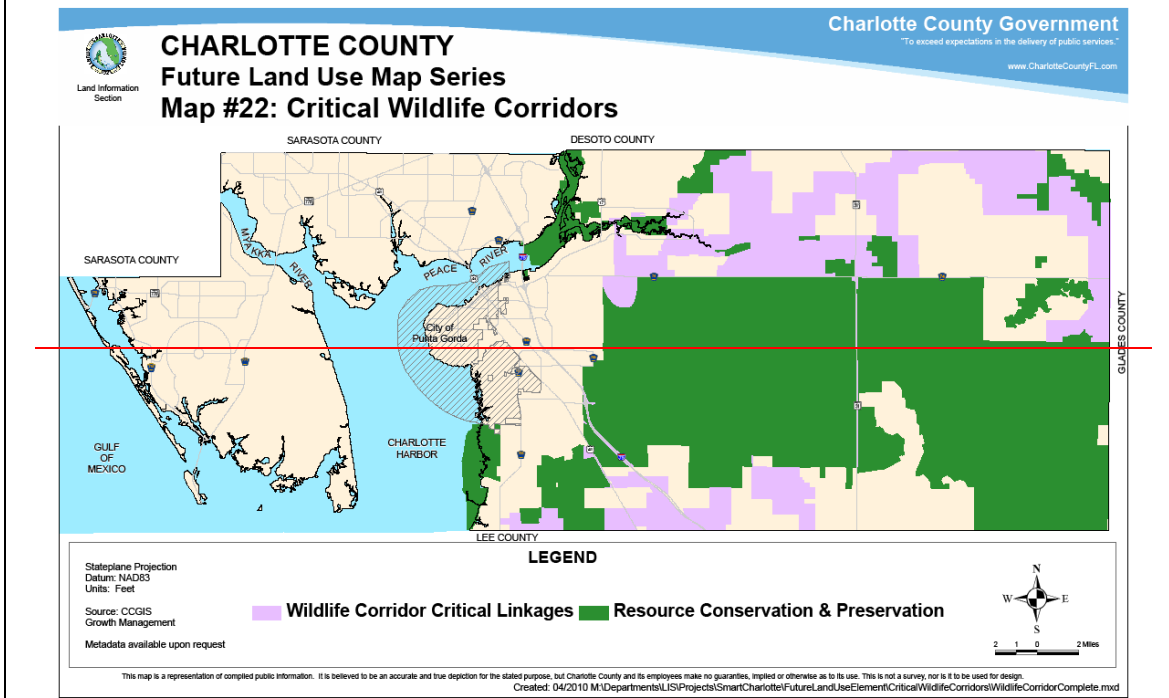
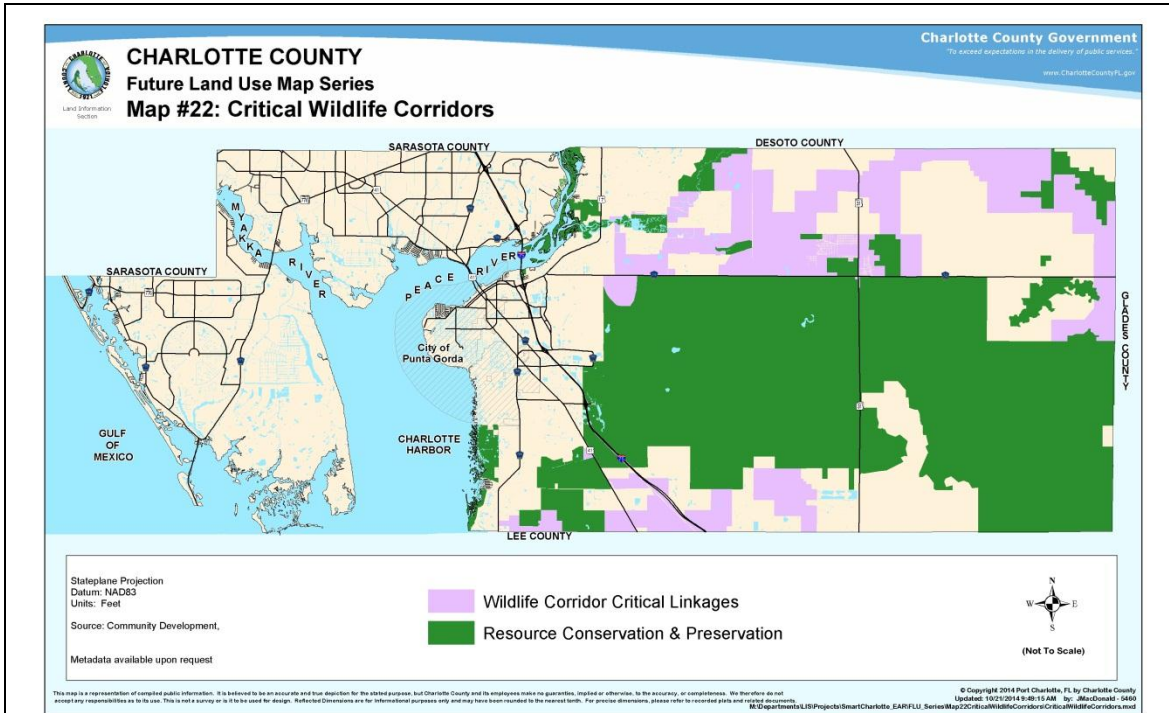
MAP 20: Topography



MAP 21: Transfer of Density Waivers



MAP 22: Critical Wildlife Corridors

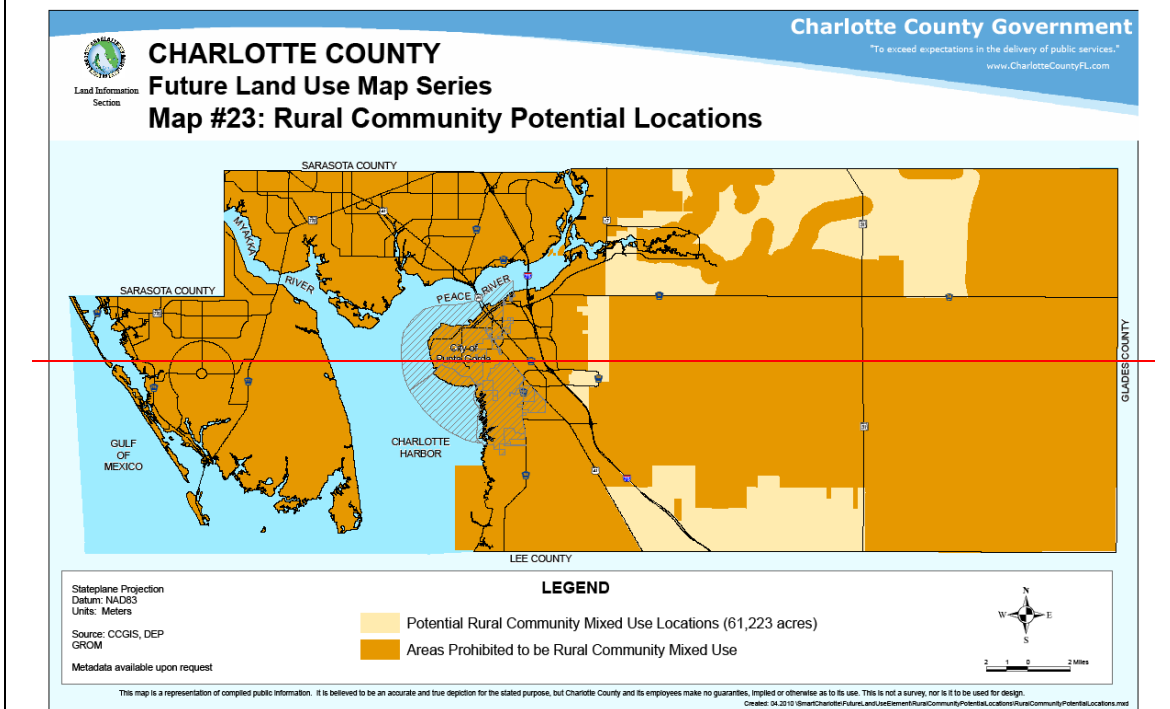
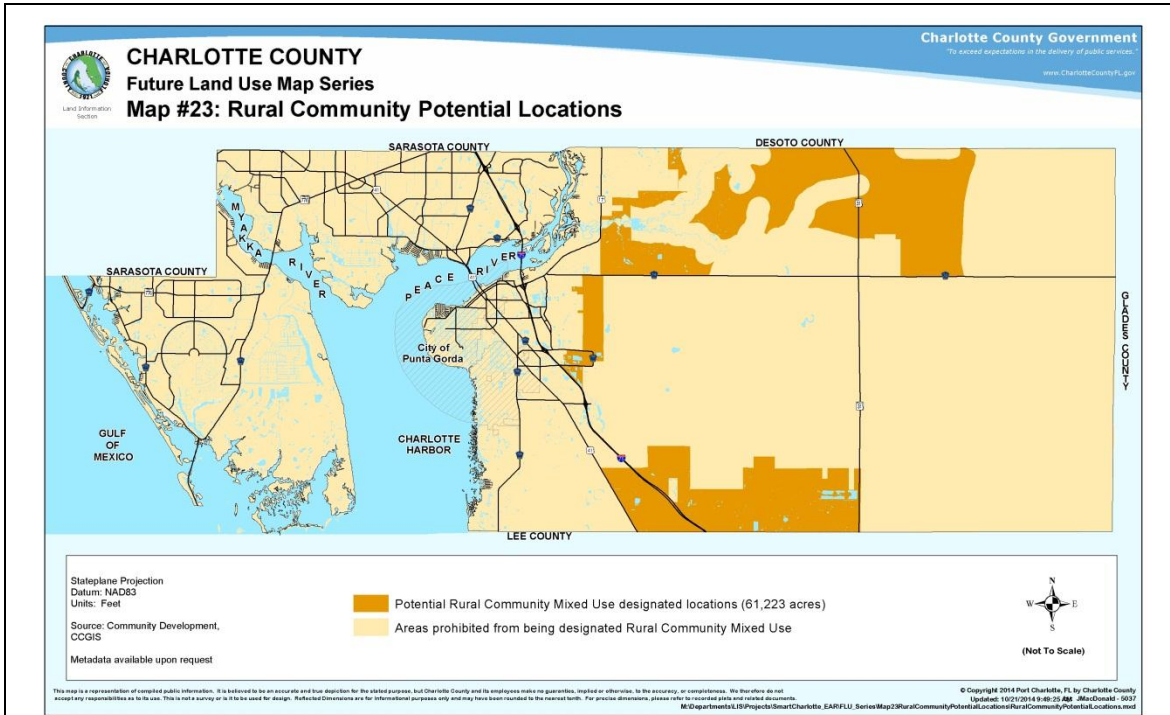


[JPG File Type*](#)

[PDF File Type*](#)

* Links only work on Web.

MAP 23: Rural Community Potential Locations

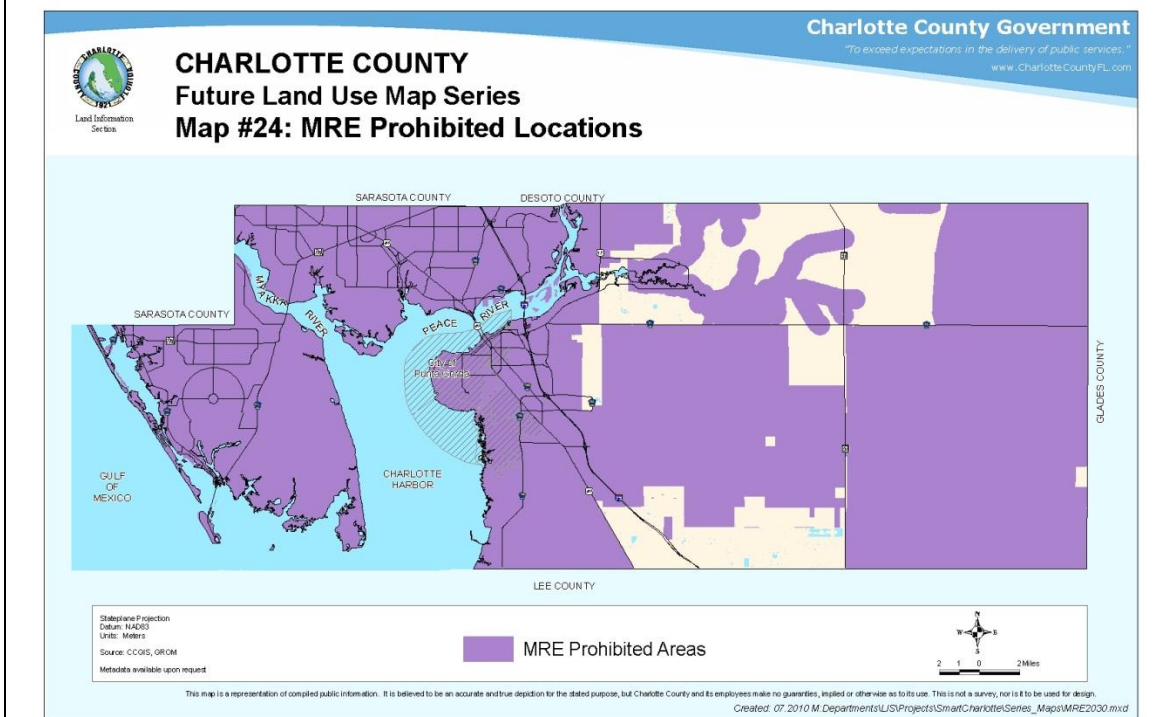
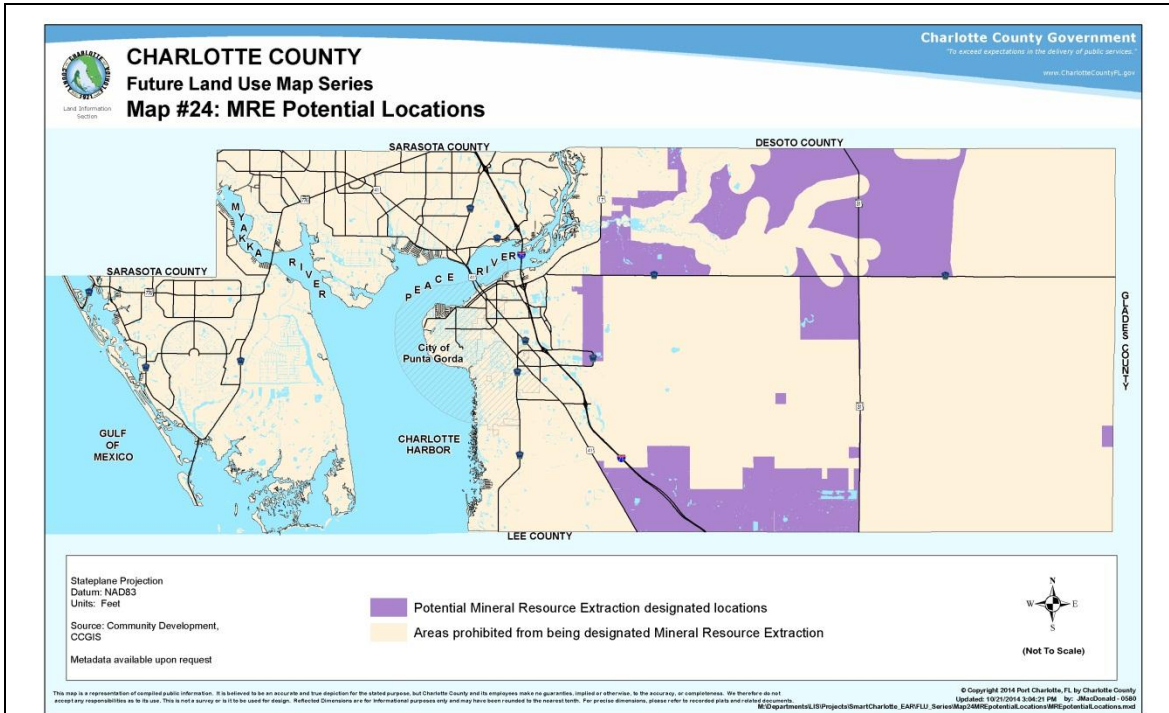


[JPG File Type*](#)

[PDF File Type*](#)

* Links only work on Web.

MAP 24: MRE Prohibited Potential Locations

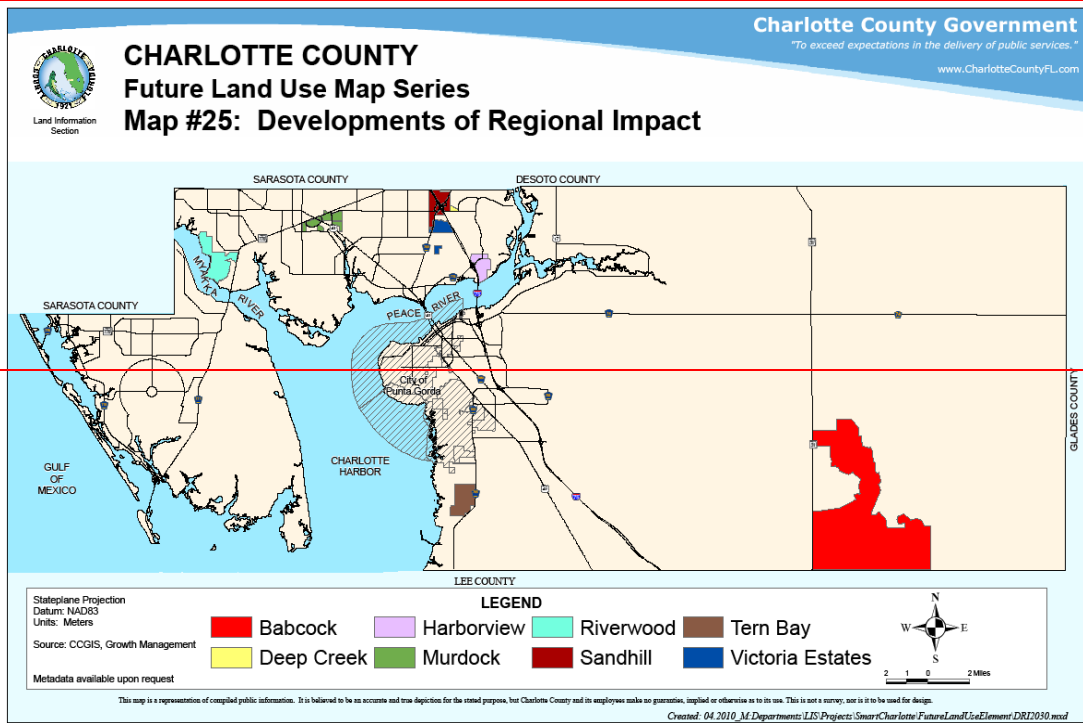
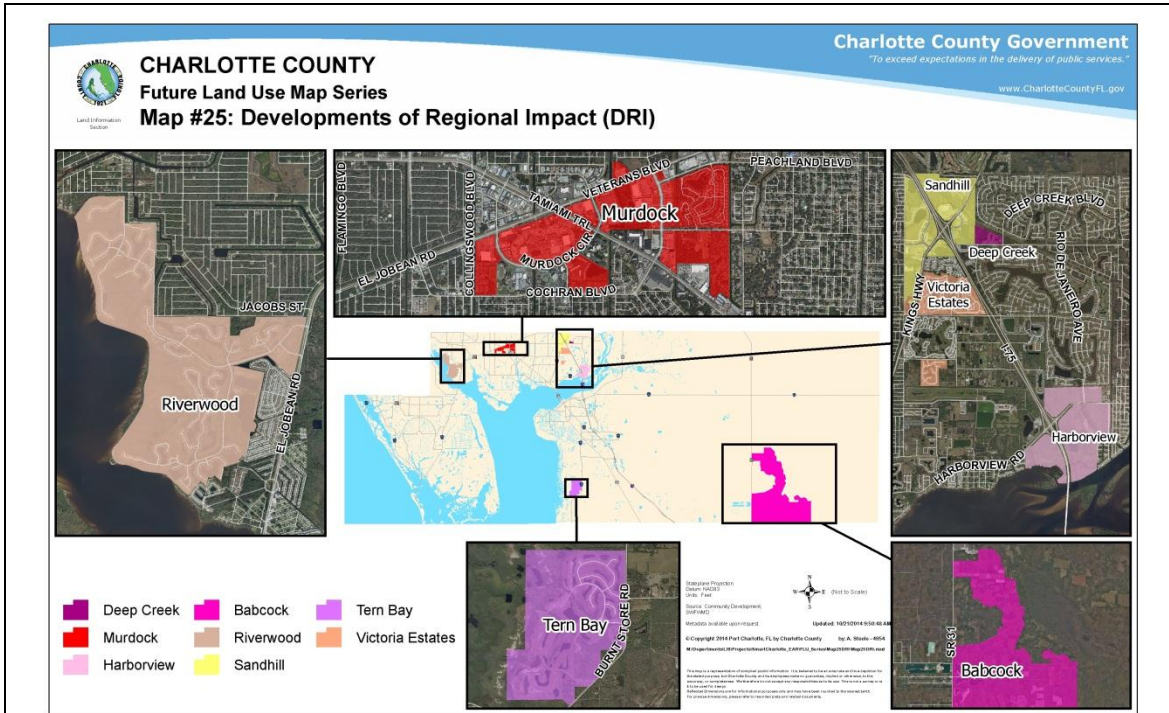


[JPG File Type*](#)

[PDF File Type*](#)

* Links only work on Web.

MAP 25: Developments of Regional Impact



[JPG File Type*](#)

[PDF File Type*](#)

* Links only work on Web.